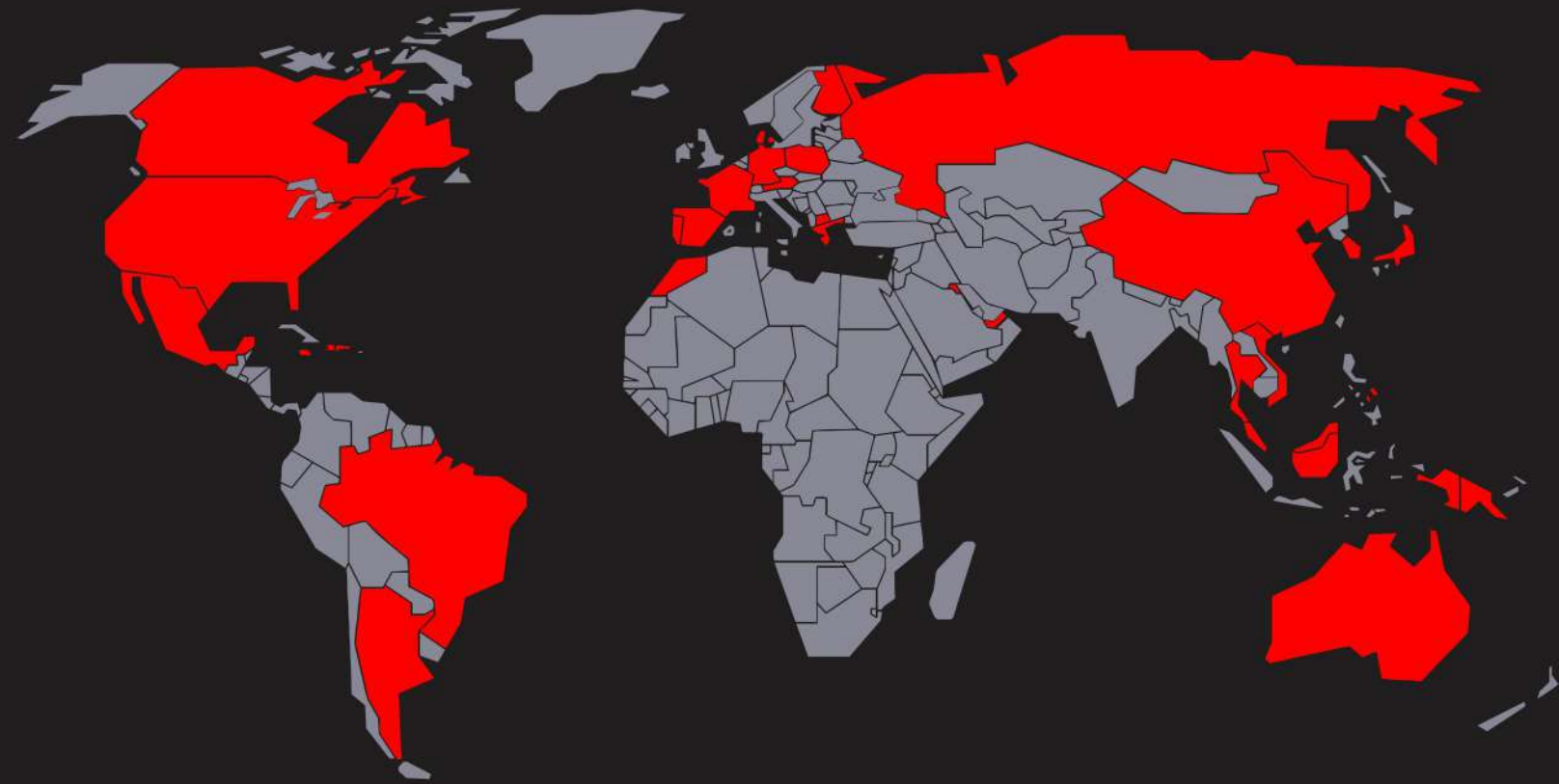


*Jettribe.com*

*Jettribe*®



Your Global PWC Riding Gear Source

- Email: [ridersupport@jettribe.com](mailto:ridersupport@jettribe.com)
- Website: [www.jettribe.com](http://www.jettribe.com)
- Phone USA: 951.246.3147



**Jettribe Corporate California**  
43460 Ridge Park Drive  
Temecula, California 92590

**Jettribe Texas Distribution Center**  
Sulphur Springs, Texas 75482

**Jettribe Asia**  
76/28/9 Le Van Phan Street.  
Phu Tho Hoa Ward, Tan Phu District, Saigon

**2020 COLLECTION**









## INTRODUCTION

Jettribe is a true core brand for the watercraft enthusiast since 1996. We've lived, breathed and loved the sport since Kawasaki 550 stand-ups were king, neon

and fluorescent colors were cool (And they are back "in" now??), and MC Hammer's running man was the move of all moves! We were drying off our mullets after every ride.

Though the times are a-changing, our mission has remained the same. With our passion and love for the watercraft industry and lifestyle, we aim to better the industry through our products and personal commitment.

In the last few years, Jettribe has stepped up our game by having two Jettribe Race Rigs for the Jettribe West Coast Series and an additional rig for the East coast events. From California to Florida, our Jettribe Race Rig brings our products to the racers, giving away prizes, providing rider support at virtually every race event and freeride event in the USA!

internationally, jettribe has been taking our Jettribe USA team overseas to more countries than ever - including china, Thailand, Martinique, and Europe.

At Jettribe we are stoked and proud to have the opportunity be the title sponsor of these events: Jettribe Asia Invitational, Jettribe West Coast National Tour, Jettribe Euro Jetski Tour, Nordic Jetski Championship, and the Jettribe Doncaster Event. Jettribe is totally grateful to have been the 2014 title sponsor of IJSBA World Finals at Lake Havasu City, Arizona. Jettribe is now the official gear of the China National Team and the Thai National Team. We are also the official partners of the Asian Aquabike Open, the Russky Grand Prix, and King's Cup Jet Ski World Cup, in addition to providing the official gear and apparel for Kings Cup.

The Watercraft industry evolved over the years. Personal Watercraft have become bigger, faster, and more powerful, but the industry's riding gear has remained largely unchanged for the last decade. We strive to evolve the gear to keep up with the PWCs and the needs of the riders. At jettribe we design, test, and develop ride gear year-round. Our ride gear are designed with the racer in mind, but still at home with the weekend warrior. We want a better experience for the rider, in comfort, durability, and protection.

At Jettribe, we build the products that we would use ourselves. Our prime mission is to provide the best quality and performance for the PWC rider first, and consider sales volumes later. The Jettribe model is to release quality products that we can truly stand behind. We are truly excited that Jettribe is considered to be one of the fastest growing PWC gear companies. We support the PWC rider and thankfully, the riders in turn support Jettribe!

The Jettribe Family!







# JETTRIBE RACE SUIT DNA

The Jettribe Wetsuit John & Jacket Race Suit is built, designed and engineered for the Personal Watercraft riders' riding stance, not for laying down like a surf suit. Jettribe Race Suits are built for the PWC rider's maximum comfort, flexibility, warmth and mobility:

- Built with 3mm panels for warmth and 2mm panels for high movement areas like the inner arms and legs
- Wetsuit John with matching Jacket included
- All seams have our interlocking flat stitch to provide a watertight seal and maximum comfort against the skin
- Carefully selected neoprene for the right combination of thickness to retain a rider's body heat in various conditions
- Neoprene is a closed, high density foam made up of thousands of tiny air bubbles (cells) which provide an insulation barrier to slow down the conduction of heat
- John/Jacket Race Suits are engineered with the understanding that constant rider movement over-generates body heat while in water and open air, as opposed to surf wetsuits that are designed to always be in water.



## WETSUIT FIT CHART

Size	Height(in/cm)	Weight (lbs/kg)	Chest (in/cm)	Waist (in/cm)
XXS	5'6 - 5'8 (168cm - 173cm)	115 - 130 (52kg - 59kg)	31" - 32" (79cm - 81cm)	24" - 26" (61cm - 66cm)
XS	5'7 - 5'9 (170cm - 175cm)	125 - 140 ( 57kg - 63.5kg)	33" - 35" (84cm - 89cm)	26" - 28" (66cm - 71cm)
S	5'8" - 5'10" (173cm - 178cm)	135 - 155 (61kg - 70kg)	36" - 38" (91cm - 96.5cm)	29" - 31" (74cm - 79cm)
M	5'9" - 5'11" (175cm - 180cm)	150 - 170 (68kg - 77kg)	38" - 40" (96.5cm - 101.5cm)	30" - 32" (76cm - 81cm)
L	5'10" - 6'0" (178cm - 183cm)	170 - 190 (77kg - 86kg)	40" - 42" (101.5cm - 107.5cm)	32" - 34" (81cm - 86cm)
XL	5'11" - 6'1" (180cm - 185cm)	190 - 210 (86kg - 95kg)	42" - 44" (107.5cm - 112cm)	34" - 36" (86cm - 91.5cm)
XXL	6'0" - 6'2" (183cm - 188cm)	210 - 230 (95kg - 104kg)	44" - 46" (112cm - 117cm)	36" - 38" (91.5cm - 96.5cm)





PRODUCT LINE	SIZE	MATERIAL
24K TEAM TRAVEL BAG	17"H x 30"L x 14"W	Nylon And Polyester
	STYLE	COLOR
	#JTA 19491	Gold

PRODUCT LINE	SIZE	MATERIAL
TOUR COAT - 24K	S - XXL	3/3 mm Jet Stretch Neoprene
	STYLE	COLOR
	#JTG 19456GD	Gold



PWC RACE SUITS

- Built with 3mm panels for warmth and 2mm panels for high movement areas like the inner arms and legs
- Vivid and Bright Screenprinted Graphics
- All seams have our interlocking flat stitch to provide a watertight seal and maximum comfort against the skin
- Carefully selected neoprene for the right combination of thickness to retain a rider's body heat in various conditions
- Neoprene is a closed, high density foam made up of thousands of tiny air bubbles (cells) which provide an insulation barrier to slow down the conduction of heat
- John/Jacket Race Suits are engineered with the understanding that constant rider movement over-generates body heat while in water and open air, as opposed to surf wetsuits that are designed to always be in water
- Wire mesh neoprene knee panels for added strength

PRODUCT LINE	SIZE	MATERIAL
WETSUIT - 24K 2 PIECE RACE SUIT WITH JOHN & JACKET	S - XXL	2/3 mm Jet Stretch Neoprene
	STYLE	COLOR
	#JTG 19455GD	Gold

WETSUIT FIT CHART

Size	Height(in/cm)	Weight (lbs/kg)	Chest (in/cm)	Waist (in/cm)
XXS	5'6" - 5'8" (168cm - 173cm)	115 - 130 (52kg - 59kg)	31" - 32" (79cm - 81cm)	24" - 26" (61cm - 66cm)
XS	5'7" - 5'9" (170cm - 175cm)	125 - 140 (57kg - 63.5kg)	33" - 35" (84cm - 89cm)	26" - 28" (66cm - 71cm)
S	5'8" - 5'10" (173cm - 178cm)	135 - 155 (61kg - 70kg)	36" - 38" (91cm - 96.5cm)	29" - 31" (74cm - 79cm)
M	5'9" - 5'11" (175cm - 180cm)	150 - 170 (68kg - 77kg)	38" - 40" (96.5cm - 101.5cm)	30" - 32" (76cm - 81cm)
L	5'10" - 6'0" (178cm - 183cm)	170 - 190 (77kg - 86kg)	40" - 42" (101.5cm - 107.5cm)	32" - 34" (81cm - 86cm)
XL	5'11" - 6'1" (180cm - 185cm)	190 - 210 (86kg - 95kg)	42" - 44" (107.5cm - 112cm)	34" - 36" (86cm - 91.5cm)
XXL	6'0" - 6'2" (183cm - 188cm)	210 - 230 (95kg - 104kg)	44" - 46" (112cm - 117cm)	36" - 38" (91.5cm - 96.5cm)





PRODUCT LINE	SIZE	MATERIAL
WETSUIT - HYPER 2 PIECE RACE SUIT WITH JOHN & JACKET	S - XXL	2/3 mm Jet Stretch Neoprene



STYLE	COLOR
#JTG 19452GN	Green



STYLE	COLOR
#JTG 19452PT	Purple/Teal



STYLE	COLOR
#JTG 19452RD	Red



STYLE	COLOR
#JTG 19452BK	Black

PWC RACE SUITS

- Built with 3mm panels for warmth and 2mm panels for high movement areas like the inner arms and legs
- Vivid and Bright Screenprinted Graphics
- All seams have our interlocking flat stitch to provide a watertight seal and maximum comfort against the skin
- Carefully selected neoprene for the right combination of thickness to retain a rider's body heat in various conditions
- Neoprene is a closed, high density foam made up of thousands of tiny air bubbles (cells) which provide an insulation barrier to slow down the conduction of heat
- John/Jacket Race Suits are engineered with the understanding that constant rider movement over-generates body heat while in water and open air, as opposed to surf wetsuits that are designed to always be in water
- Wire mesh neoprene knee panels for added strength





PRODUCT LINE		SIZE	MATERIAL
WETSUIT - SHARPENED 2 PIECE RACE SUIT WITH JOHN & JACKET		S - XXL	2/3 mm Jet Stretch Neoprene
STYLE		COLOR	
#JTM 18452-BL		Blue	



STYLE	COLOR
#JTM 18452-RD	Red



STYLE	COLOR
#JTM 18452-NO	Neon Orange



STYLE	COLOR
#JTM 18452-GN	Green



STYLE	COLOR
#JTM 18452-GY	Grey

## PWC RACE SUITS

- Built with 3mm panels for warmth and 2mm panels for high movement areas like the inner arms and legs
- Vivid and Bright Screenprinted Graphics
- All seams have our interlocking flat stitch to provide a watertight seal and maximum comfort against the skin
- Carefully selected neoprene for the right combination of thickness to retain a rider's body heat in various conditions
- Neoprene is a closed, high density foam made up of thousands of tiny air bubbles (cells) which provide an insulation barrier to slow down the conduction of heat
- John/Jacket Race Suits are engineered with the understanding that constant rider movement over-generates body heat while in water and open air, as opposed to surf wetsuits that are designed to always be in water

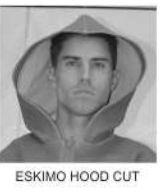
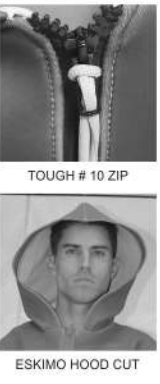
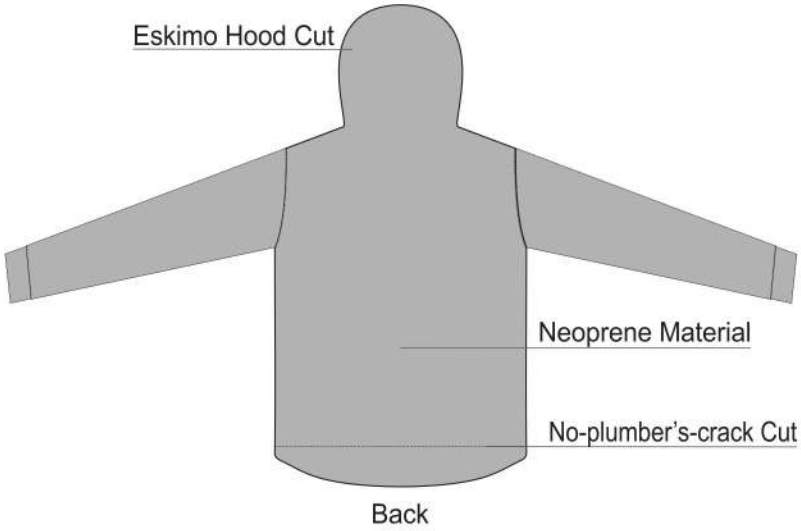
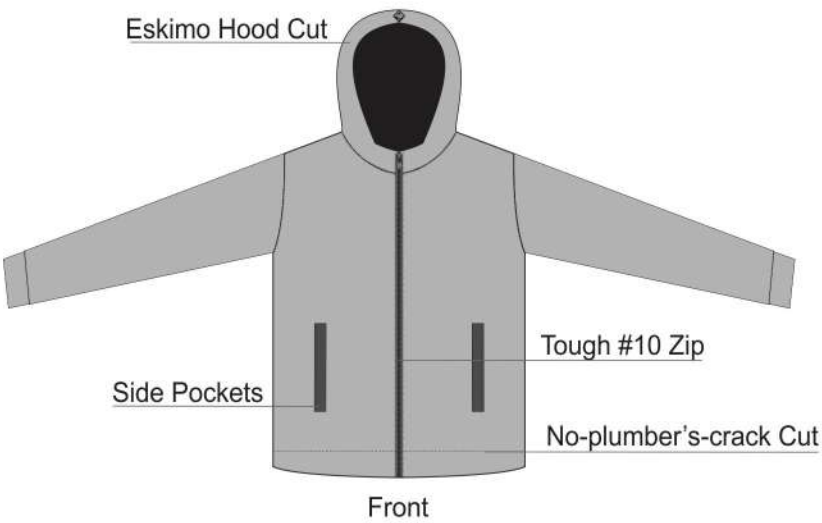




## TOUR COAT DNA

The Jettribe Neoprene Tour Coat, or Moto Jacket is designed for those chilly days on or off the water.

- Made as additional overlayer to help keep your core temperature high, primarily in your chest area
- Protects from water splashes while on your ski and the cold, high winds when flying across the water at 80MPH.
- Oversized cut to be worn over the life vest and wetsuit
- Pre-Curved elbow joints for added comfort and flexibility
- Proprietary compression process makes 5mm neoprene into 3mm for a lighter feel and better cold protection
- Screen-printed, bold, oversized are printed by vivid and bright screen-printed graphics, so material is soft and light to the touch without cracking or fading



## TOUR COAT FIT CHART

Size	Chest (in/cm)
S	33"- 38" (84cm - 96cm)
M	39"- 42" (99cm - 107cm)
L	43"- 48" (109cm - 122cm)
XL	54"- 59" (137cm - 150cm)
XXL	55"- 62" (140cm - 158cm)





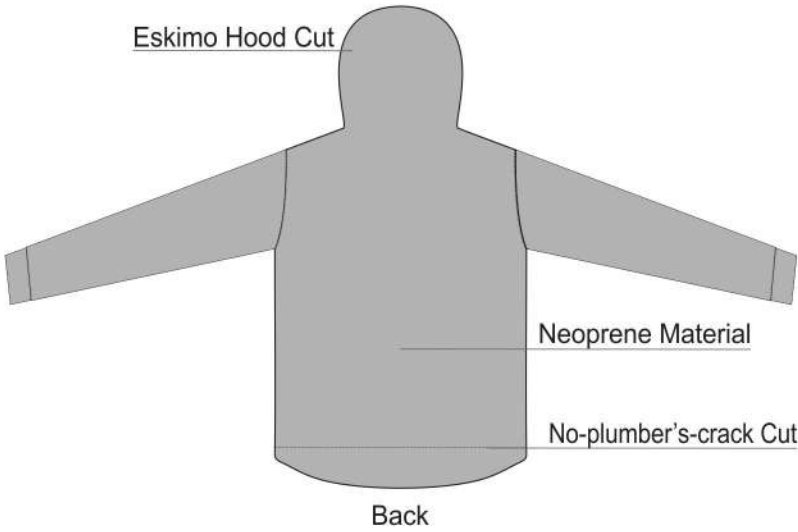
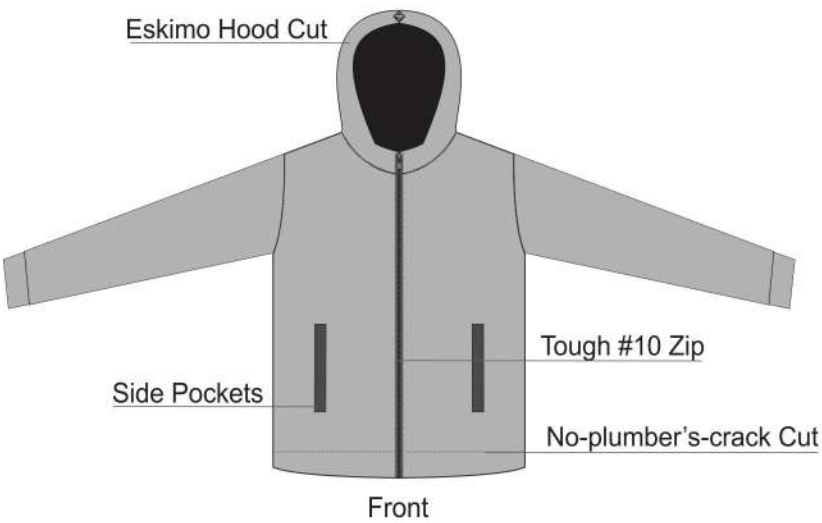
PRODUCT LINE	SIZE	MATERIAL
TOUR COAT - 24K	S - XXL	3/3 mm Jet Stretch Neoprene

STYLE	COLOR
#JTG 19456GD	Gold



## TOUR COAT DNA

- The Jettribe Neoprene Tour Coat, or Moto Jacket is designed for those chilly days on or off the water.
- Made as additional overlayer to help keep your core temperature high, primarily in your chest area
  - Protects from water splashes while on your ski and the cold, high winds when flying across the water at 80MPH.
  - Oversized cut to be worn over the life vest and wetsuit
  - Pre-Curved elbow joints for added comfort and flexibility
  - Proprietary compression process makes 5mm neoprene into 3mm for a lighter feel and better cold protection
  - Screen-printed, bold, oversized are printed by vivid and bright screen-printed graphics, so material is soft and light to the touch without cracking or fading



TOUR COAT FIT CHART	
Size	Chest (in/cm)
S	33"- 38" (84cm - 96cm)
M	39"- 42" (99cm - 107cm)
L	43"- 48" (109cm - 122cm)
XL	54"- 59" (137cm - 150cm)
XXL	55"- 62" (140cm - 158cm)





PRODUCT LINE	SIZE	MATERIAL
TOUR COAT - HYPER	S - XXL	3/3 mm Jet Stretch Neoprene



STYLE	COLOR
#JTG 19453GN	Green



STYLE	COLOR
#JTG 19453BK	Black



STYLE	COLOR
#JTG 19453PT	Purple/Teal



STYLE	COLOR
#JTG 19453RD	Red

## NEOPRENE TOUR COAT

The Jettribe Neoprene Tour Coat, or Moto Jacket is designed for those chilly days on or off the water.

- Made as additional overlayer to help keep your core temperature high, primarily in your chest area
- Protects from water splashes while on your ski and the cold, high winds when flying across the water at 80MPH.
- Oversized cut to be worn over the life vest and wetsuit
- Pre-Curved elbow joints for added comfort and flexibility
- Proprietary compression process makes 5mm neoprene into 3mm for a lighter feel and better cold protection
- Screen-printed, bold, oversized are printed by vivid and bright screen-printed graphics, so material is soft and light to the touch without cracking or fading





PRODUCT LINE	SIZE	MATERIAL
TOUR COAT - SHARPENED	S - XXL	3/3 mm Jet Stretch Neoprene

STYLE	COLOR
#JTG 18453-BL	Blue



STYLE	COLOR
#JTG 18453-NO	Neon Orange



STYLE	COLOR
#JTG 18453-GY	Grey



STYLE	COLOR
#JTG 18453-RD	Red



STYLE	COLOR
#JTG 18453-GN	Green

## NEOPRENE TOUR COAT

The Jettribe Neoprene Tour Coat, or Moto Jacket is designed for those chilly days on or off the water.

- Made as additional overlayer to help keep your core temperature high, primarily in your chest area
- Protects from water splashes while on your ski and the cold, high winds when flying across the water at 80MPH.
- Oversized cut to be worn over the life vest and wetsuit
- Pre-Curved elbow joints for added comfort and flexibility
- Proprietary compression process makes 5mm neoprene into 3mm for a lighter feel and better cold protection
- Screen-printed, bold, oversized are printed by vivid and bright screen-printed graphics, so material is soft and light to the touch without cracking or fading







# USCG VEST



23

PRODUCT LINE	SIZE	MATERIAL
USCG HYPER VEST	XS, S/M, L/XL, 2X/3XL	Nylon, EVA Foam



STYLE	COLOR
#JTG 19485GN	Green



STYLE	COLOR
#JTG 19485RD	Red



STYLE	COLOR
#JTG 19485BK	Black



STYLE	COLOR
#JTG 19485PT	Purple/Teal

24

## USCG (US COAST GUARD APPROVED) SIDE ENTRY VEST

- The Jettribe USCG (US Coast Guard Approved) Side Entry Vest is IJSBA race legal all over the world. This vest is an excellent all-around vest for riding freestyle, closed-course racing, off-shore endurance racing and naturally, for recreation PWC riding as well.
- The vest is speed rated to 100 MPH and race legal by sanctioned race organizations IJSBA & TJSBA
- Reinforced Shoulder Rescue Handle
- USCG (US Coast Guard) Certification
- Triple 38mm buckles and webbing
- Removable heavy duty PWC lanyard D-ring
- Back Deflector compatible
- Made of Nylon & EVA Foam

U.S.C.G VEST FIT CHART	
Size	Chest (in/cm)
S/M	32" - 40" (80cm - 102cm)
L/XL	42" - 50" (107cm - 127cm)





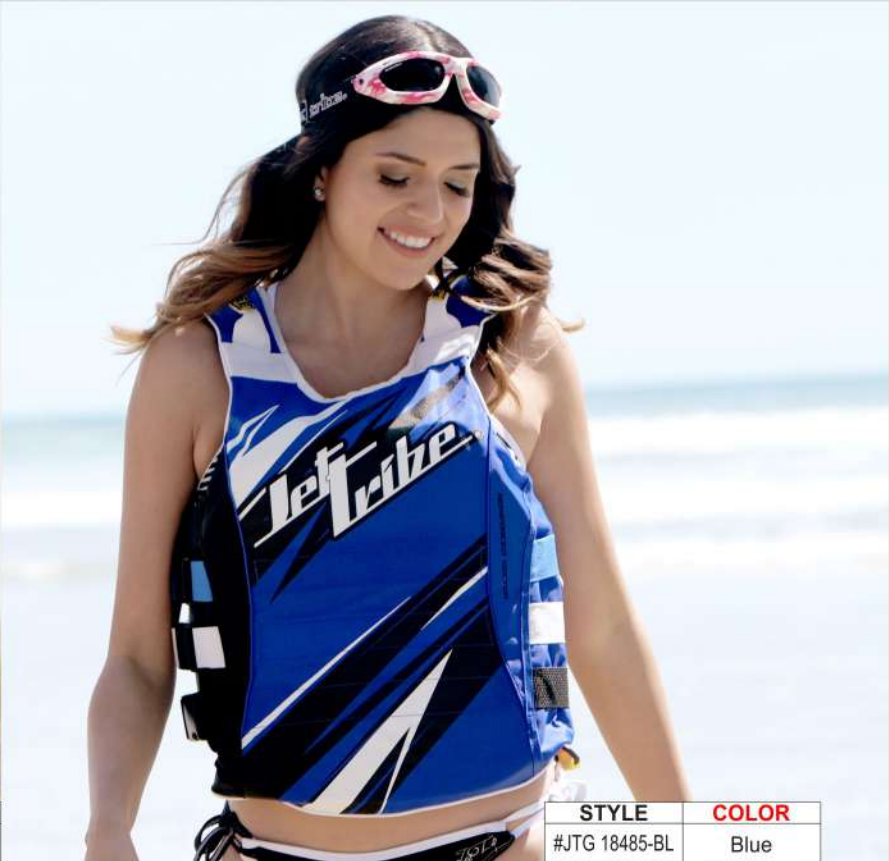
USC-G-P VEST

25

PRODUCT LINE	SIZE	MATERIAL
USCG-P VEST - SHARPENED	S/M, L/XL	UL NYLON / EVA FOAM



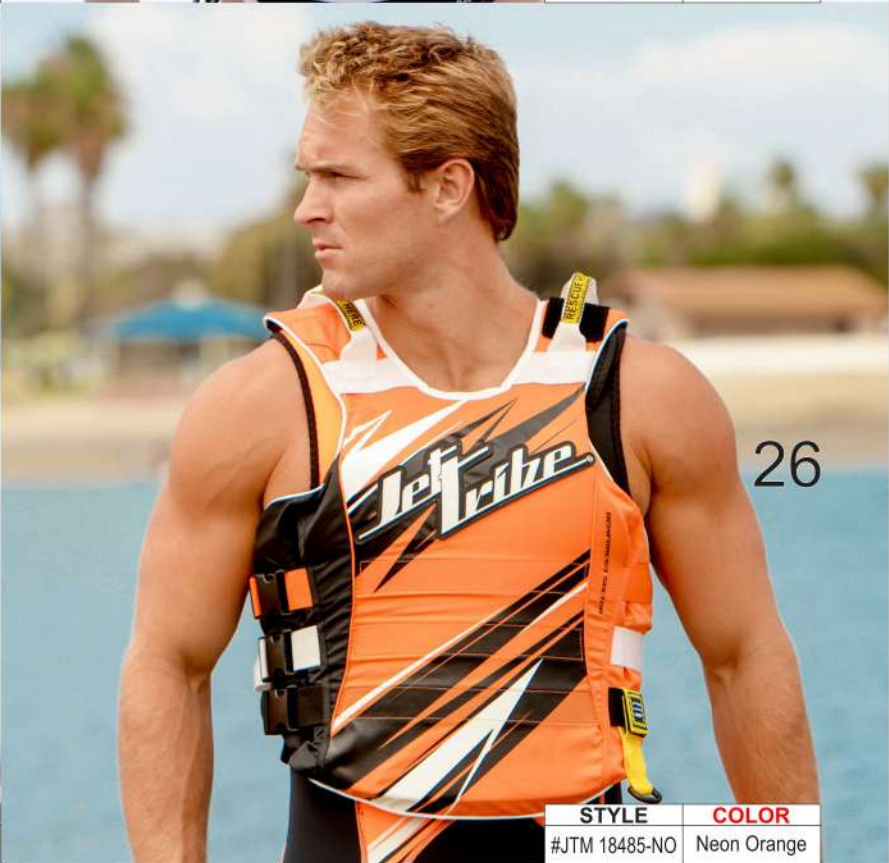
STYLE	COLOR
#JTG 18485-GY	Grey



STYLE	COLOR
#JTG 18485-BL	Blue



STYLE	COLOR
#JTG 18485-RD	Red



STYLE	COLOR
#JTM 18485-NO	Neon Orange

26

## USCG (US COAST GUARD APPROVED) SIDE ENTRY VEST

The new Jettribe USC-G-P (US Coast Guard Approved) Side Entry Vest is IJSBA race legal all over the world. This vest is an excellent all-around vest for riding freestyle, closed-course racing, off-shore endurance racing and naturally, for recreation PWC riding as well.

The new incorporated name plate uses customized vinyl lettering (sold separately) that are heat-transferred directly on your removable back name plate. Show off your Name and Race Number from your local training spot all the way to the Lake Havasu World Finals.

The vest is speed rated to 100 MPH and race legal by sanctioned race organizations IJSBA & TJSBA

- Dual rescue handles
- USCG (US Coast Guard) Certification
- Triple 38mm buckles and webbing
- Removable heavy duty PWC lanyard D-ring
- Back Deflector compatible
- Made of Nylon & EVA Foam

PRODUCT LINE	SIZE	MATERIAL
CUSTOMIZED NAME/ NUMBER	To Fit Race Plate	Cut Transfer Vinyl

Customized Name Plate  
Line 1: Name  
Line 2: Race Number

STYLE	COLOR
#JTG 18406	White

## REMOVABLE CUSTOM NAME PLATE

EXAMPLE WITH CUSTOMIZATION





# UR-20P RACE VEST DNA

- The Jettribe UR-20P Side Entry Vest is the next evolution in our UR-20 vest series. In addition to being an excellent all-around vest for free riding, freestyle and closed course racing, this vest has an incorporated name plate panel for customization. Show off your Name and Race Number from your local training spot all the way to the Lake Havasu World Finals.
- The customized vinyl lettering (sold separately) is heat-transferred directly on your removable back name plate. Even if you don't choose customization, the matching back plate is securely attached with velcro around the entire perimeter of the plate.
- The vest also incorporates our custom designed pre-molded foam, unique only to our Jettribe UR-20 race vest series. What is it? The pre-formed mold adds the ultimate in flexibility to conform to the contour of the rider's body, instead of forcing a flat piece EVA foam to wrap around a rider's chest. Plus, our second heat and pressure compression process allows us to take a 4-inch EVA foam panel and compress it down to a 2 inch thickness. This process allows for a lighter and more comfortable race vest with maximum flotation.
- Every small detail has been carefully considered. For example, all of the webbings are tacked down with a zig-zag bar tack, rescue handles are wrapped underneath, then bar tacked, then finished off with a box stitch. All webbing exit openings are reinforced with a TPR collar for durability. Most of these details are over-looked by others, but not by the Jettribe design team.
- Our Jettribe race vests have been proven with top professional racers throughout the world. Some of the features that separate our vest from the rest are: triple rescue handles, back protection compatible, triple 38mm buckles and webbing, removable heavy duty PWC lanyard D-ring, PLUS the rear race collar attachment.



## CUSTOM NAME PLATE



### UR-20 FLEX MOLD



Flexible Molded Eva Foam Panels

### EXAMPLE WITH CUSTOMIZATION



PRODUCT LINE	SIZE	MATERIAL
CUSTOMIZED NAME/ NUMBER	To Fit Race Plate	Cut Transfer Vinyl
Customized Name Plate		
Line 1: Name		
Line 2: Race Number		
STYLE	COLOR	
#JTG 18406	White	

VEST FIT CHART	
Size	Chest (in/cm)
XS	28"- 32" (71cm - 80cm)
S/M	32"- 40" (80cm - 102cm)
L/XL	42"- 50" (107cm - 127cm)
2XL/3XL	50"- 60" (127cm - 152cm)



PRODUCT LINE	SIZE	MATERIAL
UR-20P EDGE VEST	XS, S/M, L/XL, 2X/3XL	Nylon, EVA Foam
STYLE	COLOR	
#JTG 18415-NO	Neon Orange	



STYLE	COLOR
#JTG 18415-RD	Red



STYLE	COLOR
#JTG 18415-WH	White



STYLE	COLOR
#JTG 18415-GY	Grey



STYLE	COLOR
#JTG 18415-GN	Green

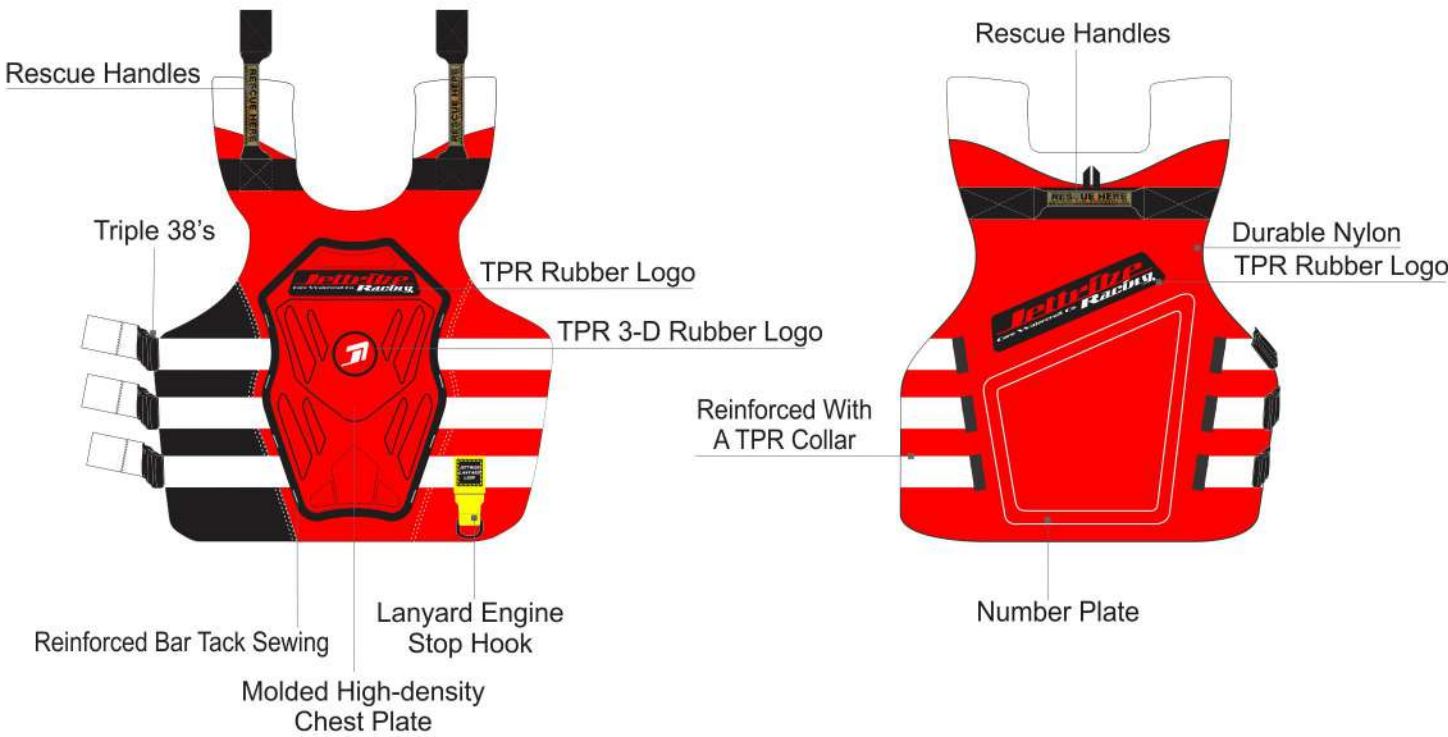


STYLE	COLOR
#JTG 18415-BL	Blue



# RS-18P VEST DNA

- The Jettribe RS-18P Side Entry Vest is the next evolution in our “RS” vest series. In addition to being an excellent all-around vest for free riding, freestyle and closed course racing, this vest has an incorporated name plate panel for customization (sold separately). Show off your Name and Race Number from your local training spot, all the way to the Lake Havasu World Finals.
- The Jettribe RS-18P is a Side-Entry Impact Vest. The important built-in feature of this vest is the high-density, EVA compression molded chest plate. The plate in the RS-18P is tougher, stronger and offers more protection than ever before to reduce chest impact effects.
- The back panel has an incorporated pre-molded foam piece, unique to our Jettribe UR and RS vest series. The pre-formed mold adds the ultimate in flexibility to conform to the contours of the rider’s back, instead of forcing a flat piece of EVA foam to wrap around a rider’s body. Plus, our second process of heat and pressure compression allows us to take a 4-inch EVA foam panel and compress it down to a 2 inch thickness. This process allows for maximum flotation for a lighter and more comfortable race vest.
- We are especially proud of the RS-18P, taking the best features of all vests and building them into this one vest. Every small detail has been carefully considered. For example, all of the webbings are tacked down with a zig-zag bar tack, rescue handles wrapped underneath and bar tacked, then finished off with a box stitch. Most of these details are over looked, but not by the Jettribe design team. Our Jettribe race vests have been proven with top professional racers throughout the world.

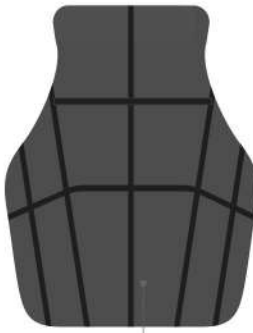


## CUSTOM NAME PLATE

EXAMPLE WITH CUSTOMIZATION



UR-20 FLEX MOLD



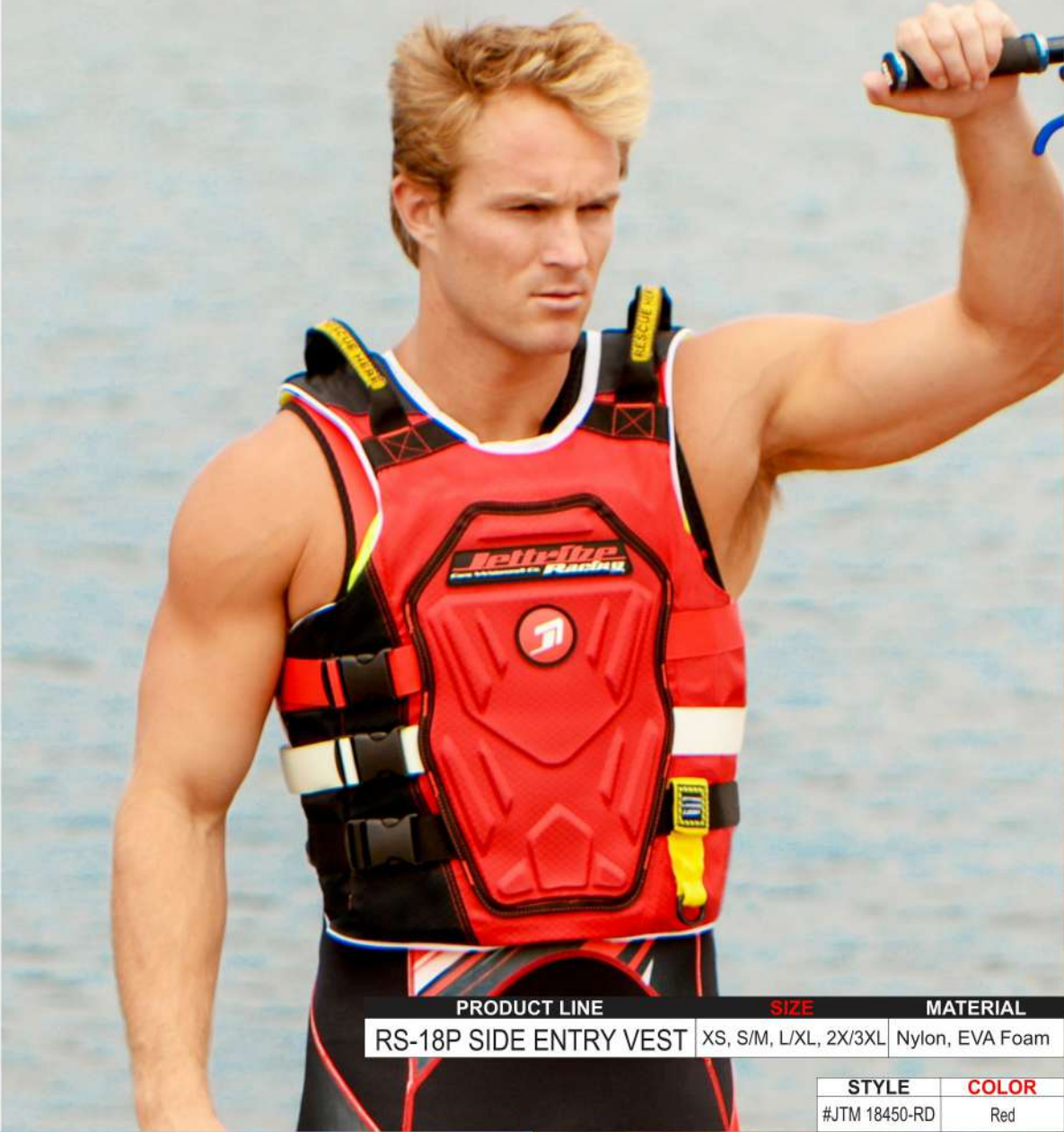
Flexible Molded Eva Foam Panels

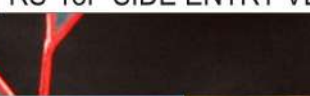


### VEST FIT CHART

Size	Chest (in/cm)
XS	28"- 32" (71cm - 80cm)
S/M	32"- 40" (80cm - 102cm)
L/XL	42"- 50" (107cm - 127cm)
2XL/3XL	50"- 60" (127cm - 152cm)

PRODUCT LINE	SIZE	MATERIAL
CUSTOMIZED NAME/ NUMBER	To Fit Race Plate	Cut Transfer Vinyl
Customized Name Plate	STYLE	COLOR
Line 1: Name	#JTG 18406	White
Line 2: Race Number		



PRODUCT LINE		SIZE	MATERIAL
RS-18P SIDE ENTRY VEST		XS, S/M, L/XL, 2X/3XL	Nylon, EVA Foam
		STYLE	COLOR
		#JTM 18450-RD	Red



STYLE	COLOR
#JTM 18450-NO	Neon Orange



STYLE	COLOR
#JTM 18450-GN	Green



STYLE	COLOR
#JTM 18450-GY	Grey



STYLE	COLOR
#JTM 18450-BL	Blue





CUSTOM RACE NUMBERS



PRODUCT LINE		SIZE	MATERIAL	
RACE # PLATE		One Size	Compressed EVA Foam	
STYLE		COLOR		
#JTG 13432-BK	Black			

STYLE		COLOR		
#JTG 13432-RD	Red			

STYLE		COLOR		
#JTG 13432-GY	Grey			

- Designed to attach the back side of any Side-Entry Vest
- Made of Compression Molded Eva Panel
- One Size

PRODUCT LINE		SIZE	MATERIAL		
USCG-P EXTO PLATE REPLACEMENT		One Size	Compressed EVA Foam		
STYLE	COLOR	STYLE	COLOR	STYLE	COLOR
#JTG 18401-NO	Neon Orange	#JTG 18401-RD	Red	#JTG 18401-GY	Grey

- Replacement Exto Plate For U.S.C.G.-P "SHARPENED" Vest style #JTG 18485
- Velcro Attachment
- Made of Compression Molded Eva Panel
- One Size

PRODUCT LINE		SIZE	MATERIAL	
UR-20P EXTO PLATE REPLACEMENT		One Size	Compressed EVA Foam	

STYLE	COLOR
#JTG 18402-GN	Green 

STYLE	COLOR
#JTG 18402-NO	Neon Orange 

STYLE	COLOR
#JTG 18402-WB	White/ Black 

- Replacement Exto Plate For UR-20P "EDGE" Vest style #JTG 18415
- Hook and Loop Attachment
- Made of Compression Molded Eva Panel
- One Size



PRODUCT LINE		SIZE	MATERIAL	
UR-20P EXTO PLATE REPLACEMENT		One Size	Compressed EVA Foam	

STYLE	COLOR
#JTG 18404-PK	Pink

STYLE	COLOR
#JTG 18404-PU	Purple

STYLE	COLOR
#JTG 18404-TL	Teal

- Replacement Exto Plate For UR-20P "NEWPORT" Vest style #JTG 18471
- Hook and Loop Attachment
- Made of Compression Molded Eva Panel
- One Size

PRODUCT LINE		SIZE	MATERIAL	
RS-18P EXTO PLATE REPLACEMENT		One Size	Compressed EVA Foam	

STYLE	COLOR
#JTG 18403-BL	Blue

STYLE	COLOR
#JTG 18403-GY	Grey

STYLE	COLOR
#JTG 18403-RD	Red

- Replacement Exto Plate For RS-18P Vest style #JTG 18450
- Hook and Loop Attachment
- Made of Compression Molded Eva Panel
- One Size

PRODUCT LINE	SIZE	MATERIAL
CUSTOMIZED NAME/ NUMBER	To Fit Race Plates	Cut Transfer Vinyl



STYLE	COLOR
#JTG 13444	White



STYLE	COLOR
#JTG 18406	White

- Customization is not included in plate price
- Item can be customized by Jettribe.com or by a local screen print shop
- JTG 13444 – Standard Font Race Plate
- JTG 13444MO – Moto Font Race Plate
- JTG 18444 – Standard Font Vest Plate
- JTG 18444MO – Moto Font Vest Plate





PRODUCT LINE		SIZE	MATERIAL
UR-20 24K VEST		XS, S/M, L/XL, 2X/3XL	Polyester, EVA Foam
		STYLE	COLOR
		#JTG 19425GD	Gold



PRODUCT LINE		SIZE	MATERIAL
RS-16 SIDE ENTRY VEST		XS, S/M, L/XL, 2X/3XL	Nylon & EVA Foam
		STYLE	COLOR
		#JTG 11428-B	Black

RS-16 PWC SIDE ENTRY RACE VEST

The Jettribe RS-16 Side Entry Vest is an excellent all-around vest for free riding, freestyle, closed course racing, offshore endurance racing and recreation riders:

- Single-piece compression molded foam in the front chest for added impact dissipation
- Webbing is tacked down with a zig-zag bar tack, rescue handles are wrapped underneath, bar tacked, then finished off with a box stitch
- Two-Buckle Closure
- Adjustable Straps
- Removable Velcro Flag Patch
- D-Ring for attaching Lanyard
- D-Ring for Race Collar Attachment
- Race Collar compatible
- Back Deflector Compatible

VEST FIT CHART

Size	Chest (in/cm)
XS	28" - 32" (71cm - 80cm)
S/M	32" - 40" (80cm - 102cm)
L/XL	42" - 50" (107cm - 127cm)
2XL/3XL	50" - 60" (127cm - 152cm)







# LADIES RACE SUIT

The Jettribe Ladies Wetsuit Jain & Jacket Race Suit has a custom female contoured cut to better fit a woman's physique. The design is still built, designed and engineered for the Personal Watercraft riders' riding stance, not laying down like a surf suit. We design our Jettribe Race Suits for the PWC's maximum comfort, flexibility, warmth and mobility:

- Built with 3mm panels for warmth and 2mm panels for high movement areas like the inner arms and legs
- Female contoured cut around chest, thighs and hips to better fit a woman's physique
- All seams have our interlocking flat stitch to provide a watertight seal and maximum comfort against the skin
- Carefully selected neoprene for the right combination of thickness to retain a rider's body heat in various conditions
- Neoprene is a closed, high density foam made up of thousands of tiny air bubbles (cells) which provide an insulation barrier to slow down the conduction of heat
- John/Jacket Race Suits are engineered with the understanding that constant rider movement over-generates body heat while in water and open air, as opposed to surf wetsuits that are designed to always be in water.

## LADIES RACE SUIT DNA



## WOMEN'S WETSUIT SIZE CHART

	Height (in/cm)	Weight (lbs/kg)	Chest (in/cm)	Waist (in/cm)
S	5'5" - 5'7" (165.1cm - 170.18cm)	120 - 135 (54.4kg - 61.3kg)	32.5" - 34.5" (82.5cm - 87.6cm)	27" - 29" (68.6cm - 73.6cm)
M	5'6" - 5'8" (167.64cm - 172.72cm)	130 - 150 (59kg - 68kg)	34" - 36" (86.4cm - 91.4cm)	29" - 30.5" (73.6cm - 77.5cm)
L	5'7" - 5'9" (170.18cm - 175.26cm)	140 - 160 (63.5kg - 72.6kg)	35.5" - 37.5" (90.2cm - 95.3cm)	30.5" - 32" (77.5cm - 81.3cm)
XL	5'8" - 5'11" (172.72cm - 180.34cm)	150 - 170 (68kg - 77.1kg)	37" - 39" (94cm - 99cm)	31" - 33.5" (78.8cm - 85.1cm)





PRODUCT LINE	SIZE	MATERIAL
LADIES NEWPORT SUIT	S - XL	2/3 mm Jet Stretch Neoprene



STYLE	COLOR
#JTL 18460-PU	Purple



STYLE	COLOR
#JTL 18460-PK	Pink

## LADIES RACE SUIT

- The Jettribe Ladies Wetsuit John & Jacket Race Suit has a custom female contoured cut to better fit a woman's physique. The design is still built, designed and engineered for the Personal Watercraft riders' riding stance, not laying down like a surf suit. We design our Jettribe Race Suits for the PWC's maximum comfort, flexibility, warmth and mobility in water.





PRODUCT LINE	SIZE	MATERIAL
LADIES NEWPORT TOUR COAT	S - XL	2/3 mm Jet Stretch Neoprene



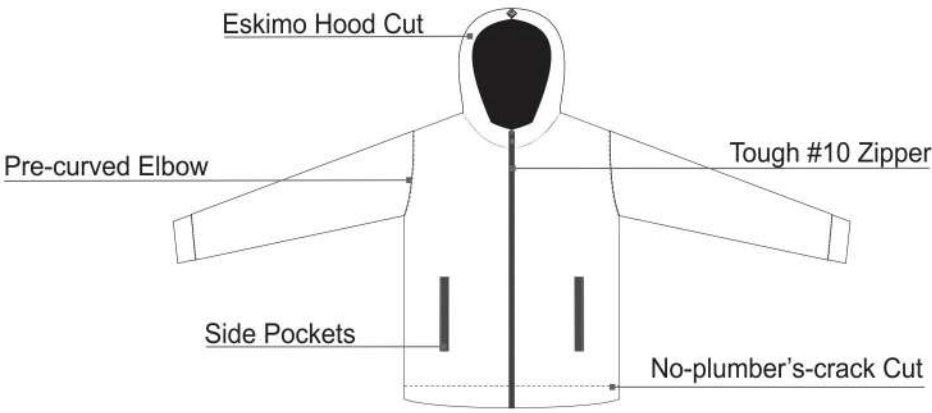
STYLE	COLOR
#JTL 18461-PK	Pink



STYLE	COLOR
#JTL 18461-PU	Purple

40

## TOUR COAT DNA



### LADIES TOUR COAT SIZE CHART

	Chest	Waist	Hip	Arm Length
S	36-38in (91cm-96 cm)	29-31 in (73cm-78cm)	38-40 in (96cm-101cm)	32.5 in (88 cm)
M	39-41 in (96cm-104cm)	32-34 in (81cm-86cm)	41-43 in (104cm-109cm)	33.3 in (90 cm)
L	42-44 in (106cm -111 cm)	35-38 in (88cm-96cm)	44-47 in (111cm-119cm)	34.0 in (92cm)
XL	45-48 in (114cm-121 cm)	39-42 in (99cm-106cm)	48-51 in (121cm-129cm)	34.8 in (94 cm)

## LADIES TOUR COAT

The Jettribe Ladies Neoprene Tour Coats are designed for those chilly days on or off the water.

- Made as additional overlayer to help keep your core temperature high, primarily in your chest area
- Custom cut to contour to a woman's physique
- Protects from water splashes while on your ski and the cold, high winds when flying across the water at 80MPH
- Oversized cut to be worn over the life vest and wetsuit
- Pre-Curved elbow joints for added comfort and flexibility
- Proprietary compression process makes 5mm neoprene until 3.5mm for a lighter feel and better cold protection
- Bold and oversized graphics are printed by gas fusion process, so material is soft and light to the touch without cracking or fading



41



PRODUCT LINE	SIZE	MATERIAL
LADIES UR-20P NEWPORT VEST	XS, S/M, L/XL, 2X/3XL	Nylon, EVA Foam



STYLE	COLOR
#JTG 18471-PK	Pink



STYLE	COLOR
#JTG 18471-PU	Purple

42

## LADIES UR-20P SIDE ENTRY VEST

The Jettribe Ladies UR-20P Side Entry Vest is the next evolution in our UR-20 vest series. In addition to being an excellent all-around vest for free riding, freestyle and closed course racing, this vest has an incorporated name plate panel for customization. Show off your Name and Race Number from your local training spot all the way to the Lake Havasu World Finals.

The customized vinyl lettering (sold separately) is heat-transferred directly on your removable back name plate. Even if you don't choose customization, the matching back plate is securely attached with velcro around the entire perimeter of the plate.

The vest also incorporates our custom designed pre-molded foam, unique only to our Jettribe UR-20 race vest series. What is it? The pre-formed mold adds the ultimate in flexibility to conform to the contour of the rider's body, instead of forcing a flat piece EVA foam to wrap around a rider's chest. Plus, our second heat and pressure compression process allows us to take a 4-inch EVA foam panel and compress it down to a 2 inch thickness. This process allows for a lighter and more comfortable race vest with maximum flotation.

Our Jettribe race vests have been proven with top professional racers throughout the world. Some of the features that separate our vest from the rest are: triple rescue handles, back protection compatible, triple 38mm buckles and webbing, removable heavy duty PWC lanyard D-ring PLUS the rear race collar attachment.

### CUSTOM NAME PLATE



### VEST FIT CHART

Size	Chest (in/cm)
XS	28"- 32" (71cm - 80cm)
S/M	32"- 40" (80cm - 102cm)
L/XL	42"- 50" (107cm - 127cm)
2XL/3XL	50"- 60" (127cm - 152cm)





PRODUCT LINE	SIZE	MATERIAL
GRB 3.0 BOOT	6, 7, 8, 9, 10, 11, 12, 13	Neoprene/Stretch Mesh/Rubber
STYLE	COLOR	
#JTG 17496	Black/Grey	



PRODUCT LINE	SIZE	MATERIAL
LYCRA SOCKS	XS/S, M/L XL/XXL	Jet 4-way Stretch Lycra
STYLE	COLOR	
#JTG 10401	Black	

## GATOR SOCKS

- Recommended for use with all our boots
- Exclusive Dual-Layer design with a second layer that folds over the top
- Made of water-wicking Lycra
- Keeps sand and rocks out of the boot

Size	USA	EUROPE
XS/S	5-6	38-39
M/L	7-9	40-42
XL/XXL	10-13	43-46

## GRB 3.0 RACE BOOT

- Rubber soles are designed with three raised contact points to accommodate a PWC rider's aggressive stance.
- Extra high neoprene cut limits rocks and gravel from getting in.
- 9 mesh flow through panels allow water to drain quickly.
- 2 adjustable velcro straps and extra-strong marine grade zipper for a custom fit.
- Pre-curved sole with arch support allows maximum comfort.
- Sole wraps around the sides and toe, limiting the lateral "side-to-side" movement.
- Built with water tolerant materials and reinforced sewing to prevent breaking apart after hard use.
- Tough rubber toe protects toes on rocky beaches.
- Unisex boot, based on men's sizing.

## GRB 3.0 RACE BOOT DNA



USA AND EUROPE CONVERSION CHART								
US	6	7	8	9	10	11	12	13
Euro	40	41	42	43	44	45	46	47





PRODUCT LINE		SIZE	MATERIAL
AMPHIB SHOES		5, 6, 7, 8, 9, 10, 11, 12, 13	Neoprene / Rubber TPR
STYLE	COLOR		
#JTG 18405	Grey		

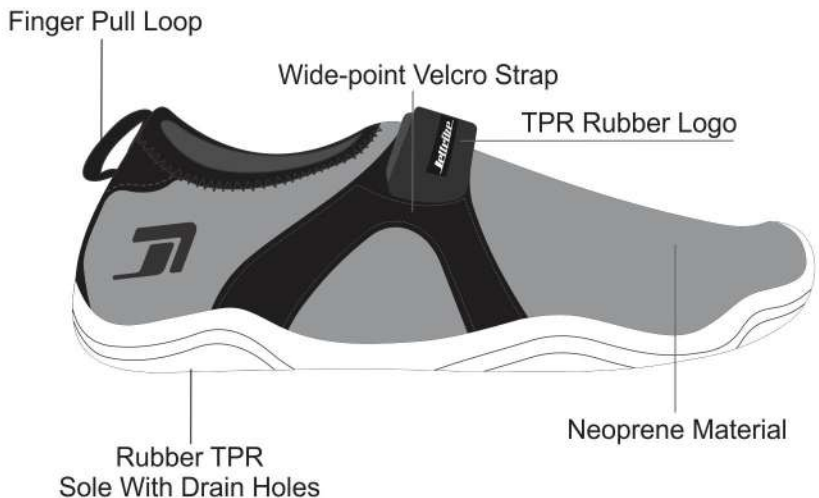
# AMPHIB RIDE SHOES

- Jettribe Amphib Ride Shoes are a hybrid of what our customers love most about our water shoes. The top is a neoprene water shoe with a wide-point adjustable velcro strap. The bottom has a comfortable rubber sole for better grip.
- The Rubber TPR over-molded sole is designed to keep you on your feet and comfortable when walking from water to land. The built-in drain holes prevent water-logged feet. Run from your ski to the shore, then back again for more action on the water!
- Unisex shoe, based on Men's sizing.



USA AND EUROPE CONVERSION CHART									
US	5	6	7	8	9	10	11	12	13
Euro	38	39	40	41	42	43	44	45	46

## AMPHIB SHOES DNA



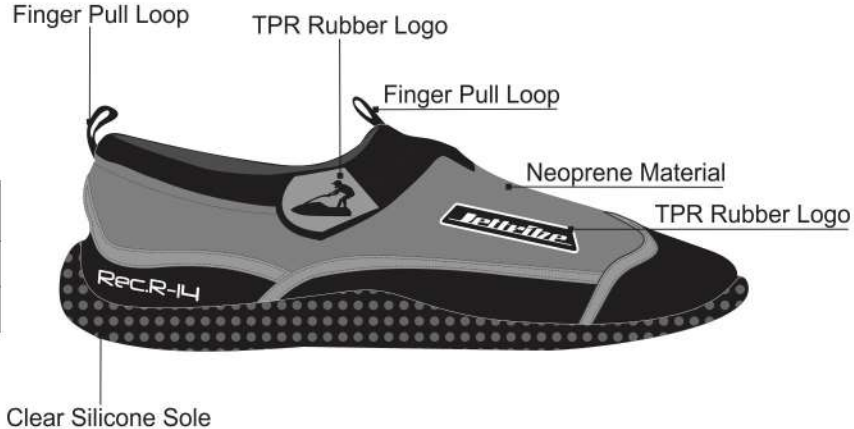
# R-14 RIDE SHOES DNA

- Rec R-14 PWC Ride Shoes are a perfect low-cut bootie for watercraft riding and walking on shore.
- Keeping with the race-proven Gecko Grip design, and the flexibility and comfort of a water shoe, this shoe is a must for water recreation and any PWC rider.
- Unisex shoe, based on Men's sizing.



PRODUCT LINE		SIZE	MATERIAL
REC R-14 PWC RIDE SHOES		5, 6, 7, 8, 9, 10, 11, 12, 13	Neoprene / Clear Silicone
STYLE	COLOR		
#JTG 10402-GB	Grey/ Black		
STYLE	COLOR		
#JTG 10402-YB	Yellow/Blue		

USA AND EUROPE CONVERSION CHART									
US	5	6	7	8	9	10	11	12	13
Euro	38	39	40	41	42	43	44	45	46





# RACE GLOVE DNA



PRODUCT LINE	SIZE	MATERIAL
RACE SKIN - SHARPENED	S - XXL	Nylon, Air Mesh

- Pre-Curved fingers for Natural Grip Comfort
- 4-Way Stretch Heavy Woven Lycra, For Water Resistance Quick Drying and Durability
- Silicone Throttle Grip For Non Slip Handling
- Extra Reinforced Thumb
- Watercraft Traction Reinforced Palm
- Neoprene Cuff with TPR Logo Velcro Pull Tab
- Curved palm for easy pull on

Size	
Small	2.5" (6.4cm)
Medium	3" (7.6cm)
Large	3.5" (8.9cm)
X-Large	4" (10.2cm)
XXL	4.5" (11.4cm)



STYLE	COLOR
#JTG-19424RD	Red/Black



STYLE	COLOR
#JTG-19424BK	Grey/Black



STYLE	COLOR
#JTG-19424PT	Purple/Teal



STYLE	COLOR
#JTG-19424GN	Green/Black



STYLE	COLOR
#JTG-18435-RD	Red



STYLE	COLOR
#JTG-18435-GY	Grey

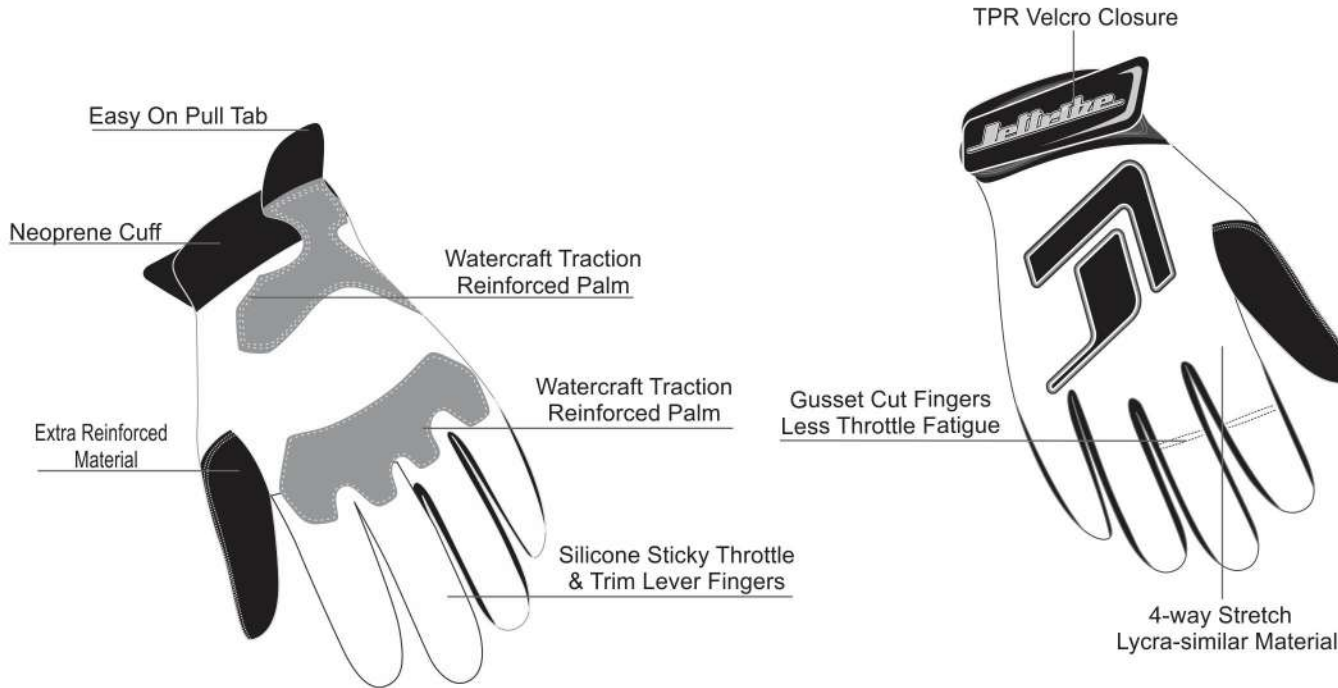


STYLE	COLOR
#JTG-18435-BL	Blue



STYLE	COLOR
#JTG-18435-GN	Neon Green

# RACE GLOVE DNA



PRODUCT LINE	SIZE	MATERIAL
2ND SKIN GLOVES - PIXEL	S - XXL	Nylon, Air Mesh

- Pre-Curved fingers for Natural Grip Comfort
- 4-Way Stretch Heavy Woven Lycra, For Water Resistance Quick Drying and Durability
- Silicone Throttle Grip For Non Slip Handling
- Extra Reinforced Thumb
- Watercraft Traction Reinforced Palm
- Neoprene Cuff with TPR Logo Velcro Pull Tab
- Curved palm for easy pull on

Size	
Small	2.5" (6.4cm)
Medium	3" (7.6cm)
Large	3.5" (8.9cm)
X-Large	4" (10.2cm)
XXL	4.5" (11.4cm)







- Universal fit for any Jettribe Side-Entry Vest:RS-16, RS-17.2, Race & U.S.C.G.,RS-18, UR-20
  - JetPilot Side-Entry and QuakySense, Yamaha, Kawasaki FlySide-Entry Vest.
  - High impact energy absorbing.
  - External ABS plastic shell.
  - Over-under locking velcro for added strength.
  - The Back Deflectors are securely attached at six points.
  - Meets IJSBA back protection requirements at all sanctioned races world wide.
  - The only back protection gear designed exclusively for PWC racing.
  - Designed to be worn over the side entry lifevest. The (First Layer) design to is reduce deflect or defeat the accidental impactat the farthest layer away from therider's body.
- 
- Constructed of a dual sandwich compression molded EVA foam.This rigid layerprovides a semi-hard frame but is still flexible.The double EVA foam layers add addition flotation and impactenergy absorbing factors.
  - Floats independently, which means when attached to your race vest, it will not reduce the flotation of your vest.



PRODUCT LINE		SIZE		MATERIAL
BACK DEFLECTOR - STRIKER		Adult: 23"L x 9.5"W x 1.25"D (58cm x 24cm x 3cm)	Youth: 20.5"L x 9.5"W x 1.25"D (52cm x 24cm x 3cm)	Compressed EVA Foam / ABS Plastic

STYLE	COLOR
Small/ Youth	#JTG 16416S-GW
	Grey/White

STYLE	COLOR
Adult	#JTG 16416-GW
	Grey/White



# LEG DEFLECTOR

51



PRODUCT LINE	SIZE	MATERIAL
LEG DEFLECTOR - REACTIVE	One Size	EVA Outer Shell / ABS Plastic Internal Panel

STYLE	COLOR
#JTG 11418-GS	Grey / Black

This Reactive Leg Guard set is a hybrid design used by Racers and Rec Riders everywhere. For those who ride hard, they help protect the outer side of your lower leg from the sides of your ski. Many riders who buy these leg guards have already experienced some sort of accident involving injuries to the lower leg. They wished they would have invested in a pair of these before that ever happened because the whole injury could have been avoided. Make sure to get yours today to prevent injury!

- Lightweight, thanks to the neoprene and airmesh material
- Built-in drain holes to keep water from bogging it down
- Front and side impact panels constructed of 5 layers of energy dissipating materials

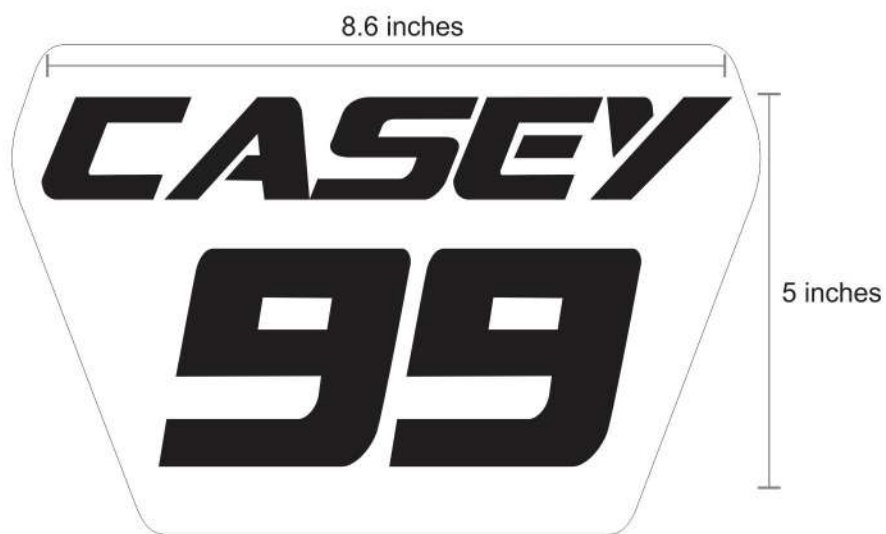
PRODUCT LINE	SIZE	MATERIAL
RACE # PLATE	One Size	Compressed EVA Foam

- Designed to attach the back side of any side-entry vest
- Made of compression molded eva panel with abs and poly-carbonate insert
- One size
- Custom race number and name is not included in price
- Race number and name can be customized at your local screen print shop



PRODUCT LINE	SIZE	MATERIAL
CUSTOMIZED NAME/ NUMBER	To Fit Race Plate	Cut Transfer Vinyl

- Customization is not included in plate price
- Item can be customized by Jettribe.com or by a local screen print shop



STYLE	COLOR
#JTG 13432-GY	Grey

STYLE	COLOR
#JTG 13432-BK	Black

STYLE	COLOR
#JTG 13432-RD	Red





# PIT SHIRTS



53

PRODUCT LINE **SIZE** MATERIAL  
PIT-SHIRTS S - XXL Polyester

STYLE **COLOR**  
#JTM 19432PT Hyper - Purple/Teal



STYLE **COLOR**  
#JTM 19432GN Green



STYLE **COLOR**  
#JTM 19432BK Hyper - Black



54

STYLE **COLOR**  
#JTM 19432RD Red

## MEN'S PIT SHIRT SIZE CHART

Size	Body Width	Body Length	Shoulder Width (Seam to Seam)
S	18" (45.72cm)	27" (68.58cm)	17" (43.18cm)
M	20" (50.8cm)	29" (73.66cm)	19" (48.26cm)
L	22" (55.88cm)	31" (78.74cm)	21" (53.34cm)
XL	24" (60.96cm)	32" (81.23cm)	23" (58.42cm)
XXL	26" (66.04cm)	33" (83.82cm)	25" (63.5cm)

## PIT SHIRT DNA





RASHGUARDS



55

PRODUCT LINE **SIZE** MATERIAL  
RASHGUARDS S - XXL 4-Way Stretch Polyester Lycra

STYLE **COLOR**  
#JTG 19433RD Hyper - Red



STYLE **COLOR**  
#JTG 19433BK Hyper - Black



STYLE **COLOR**  
#JTG 19433GN Hyper - Green



STYLE **COLOR**  
#JTG 19433PT Hyper - Purple/Teal

56

MEN'S RASHGUARD SIZE CHART

Men	Height	Weight	Chest	Waist
S	5'8 - 5'10 (172.5cm - 177.5cm)	135 - 155 (61.24kg - 70.30kg)	36.5 - 38.5 (92.71cm - 97.79cm)	29 - 31 (73.66cm - 78.74cm)
M	5'9 - 5'11 (175cm - 180cm)	150 - 170 (68.03kg - 77.11kg)	38.5 - 40.5 (92.71cm - 102.87cm)	30.5 - 32.5 (77.47cm - 82.55cm)
L	5'10 - 6' (177.5cm - 183cm)	170 - 190 (77.11kg - 86.18kg)	40.5 - 42.5 (102.87cm - 107.95)	32.5 - 34.5 (82.55cm - 87.63cm)
XL	5'11 - 6'1 (180cm - 185.5cm)	190 - 210 (86.18kg - 95.25kg)	42.5 - 44.5 (107.95cm - 113.03cm)	34.5 - 36.5 (82.55cm - 92.71cm)
XXL	6 - 6'2 (183cm - 188cm)	210 - 230 (95.25kg - 104.32kg)	44.5 - 46.5 (113.03cm - 118.11cm)	36.5 - 38.5 (92.71cm - 97.79cm)





PRODUCT LINE	SIZE	MATERIAL
RASHGUARDS	S - XXL	4-Way Stretch Polyester Lycra
STYLE	COLOR	
#JTG 18433-BL	Sharpened - Blue	



STYLE	COLOR
#JTG 18433-GY	Sharpened - Grey

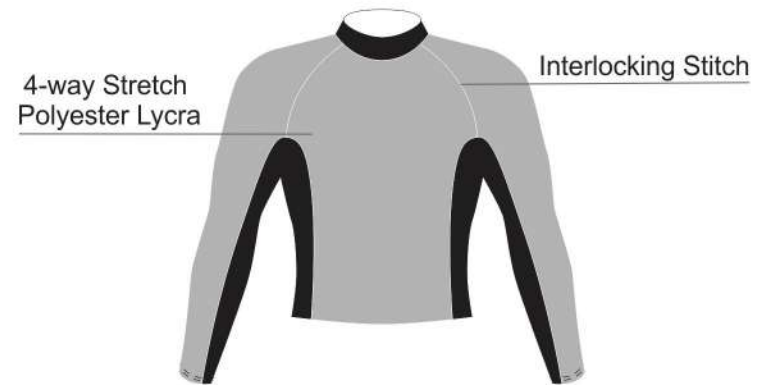
STYLE	COLOR
#JTG 18433-RD	Sharpened - Red

# RASHGUARDS

With UV Protection, breathable and quick-drying, the Jettribe Rashguard is constructed with 20% Spandex and 80% polyester fabric, which provides lightweight, stretchy, and easy movement for riding PWC and other water activities. The comfort, fit, and design offer ultimate warmth and sunburn prevention for hours of PWC riding.

**FLAT LOCK STITCHING -** Flatlock stitching is an ideal stitching style for watercraft riding gear. The parallel stitching method is perfect for riding gear due to its strength and flexibility. Open to water penetration, the unique seam offers high performance and fast drying times, that complement the rashguard's light, breathable fabric. Count on flat-lock stitching to keep your long or short sleeved guard wearing great every day. The tight fit provides optimal staying power on even the roughest waters.

The Jettribe rashguard's fade-resistant coloring and design is made to enhance your time on the water. Make the most out of your next ride with this high performance and comfortable rashguard.



Ultra Violet Sun Protection



Flat Lock Sewing

## MEN'S RASHGUARD SIZE CHART

Men	Height	Weight
S	5'8 - 5'10 (172.5cm - 177.5cm)	135 - 155 (61.24kg - 70.30kg)
M	5'9 - 5'11 (175cm - 180cm)	150 - 170 (68.03kg - 77.11kg)
L	5'10 - 6' (177.5cm - 183cm)	170 - 190 (77.11kg - 86.18kg)
XL	5'11 - 6'1 (180cm - 185.5cm)	190 - 210 (86.18kg - 95.25kg)
XXL	6 - 6'2 (183cm - 188cm)	210 - 230 (95.25kg - 104.32kg)
	Chest	Waist
S	36.5 - 38.5 (92.71cm - 97.79cm)	29 - 31 (73.66cm - 78.74cm)
M	38.5 - 40.5 (92.71cm - 102.87cm)	30.5 - 32.5 (77.47cm - 82.55cm)
L	40.5 - 42.5 (102.87cm - 107.95)	32.5 - 34.5 (82.55cm - 87.63cm)
XL	42.5 - 44.5 (107.95cm - 113.03cm)	34.5 - 36.5 (82.55cm - 92.71cm)
XXL	44.5 - 46.5 (113.03cm - 118.11cm)	36.5 - 38.5 (92.71cm - 97.79cm)





PRODUCT LINE	SIZE	MATERIAL
METALLIC SHORTS	28, 30, 32, 34, 36, 38, 40	Microfiber Polyester



STYLE	COLOR
#JTM 18246-SL	Silver

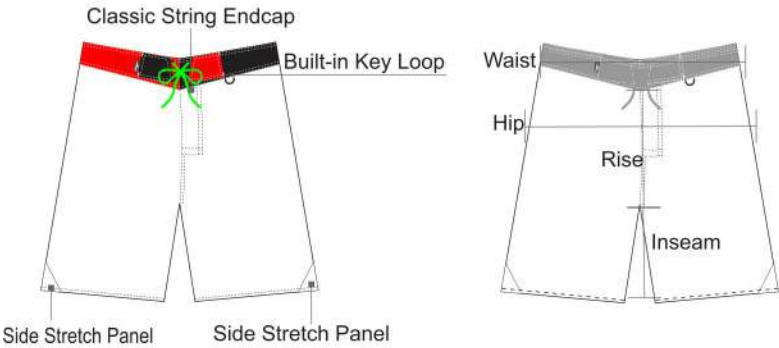


STYLE	COLOR
#JTM 18246-GD	Gold

MEN'S BOARDIES

- Side triangle stretch panel to reduce blowout from falling
- 100% heavy duty polyester quick dry material
- White shoe-string with classic end cap to reduce fraying
- Built-in key loop lanyard D-ring
- Rubber TPR drain hole - so water exits out of the shorts with no balloon effect
- Reinforced "X" bar stitch throughout
- Graphics applied sublimation gas fusion, so the material is soft and light to the touch without fading or cracking

MEN'S BOARD SHORTS DNA



MEN'S SHORTS CHART

SIZE	WAIST	RISE	HIP	INSEAM
30	30	9	36	10
32	32	9.5	41	10
34	34	10.5	42	10.5
36	36	10.5	46	11.5
38	38	10.5	47	12
40	40	11	48	13





PRODUCT LINE	SIZE	MATERIAL
MEN'S BOARDSHORTS	28, 30, 32, 34, 36, 38, 40	Microfiber Polyester



STYLE	COLOR
#JTM 19242GN	Hyper - Green



STYLE	COLOR
#JTM 19242RD	Hyper - Red



STYLE	COLOR
#JTM 19242BK	Hyper - Black

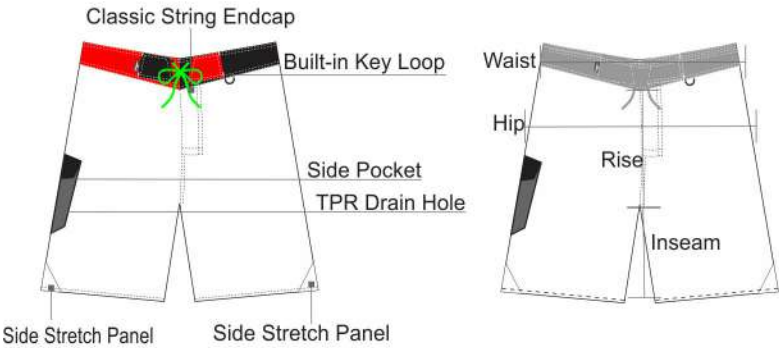


STYLE	COLOR
#JTM 19242PT	Hyper - Purple/Teal

MEN'S BOARDIES

- Side triangle stretch panel to reduce blowout from falling
- 100% heavy duty polyester quick dry material
- White shoe-string with classic end cap to reduce fraying
- Built-in key loop lanyard D-ring
- Rubber TPR drain hole - so water exits out of the shorts with no balloon effect
- Reinforced "X" bar stitch throughout
- Graphics applied sublimation gas fusion, so the material is soft and light to the touch without fading or cracking

MEN'S BOARD SHORTS DNA



MEN'S SHORTS CHART

SIZE	WAIST	RISE	HIP	INSEAM
30	30	9	36	10
32	32	9.5	41	10
34	34	10.5	42	10.5
36	36	10.5	46	11.5
38	38	10.5	47	12
40	40	11	48	13





PRODUCT LINE	SIZE	MATERIAL
T-SHIRTS	S - XXL	100% Pre Shrunk Cotton

STYLE	COLOR
#JTM 17241 Logo Stack	Black



STYLE	COLOR
#JTM 17243 Saloon	Black



STYLE	COLOR
#JTM 18208 Stand Up Scene	Black



STYLE	COLOR
#JTM 17242 Diner Tee	Grey



STYLE	COLOR
#JTM 17238 Piston Tee	Charcoal Grey



STYLE	COLOR
#JTM 17234-BY Jet Tee	Black/ Yellow



STYLE	COLOR
#JTM 17259 Bolt Tee	Grey

## T-SHIRTS

- + 100 % Pre Shrunk Cotton
- + Ribbed collar
- + Ring spun, no side sewn seams
- + Zig-Zag hem sewn for extra durability
- + Printed in California USA
- + Retail spec cut to ensure a true fit

### MEN'S T-SHIRT SIZE CHART

Size	Body Width	Body Length	Shoulder Width (Seam to Seam)
S	18" (45.72cm)	27" (68.58cm)	17" (43.18cm)
M	20" (50.8cm)	29" (73.66cm)	19" (48.26cm)
L	22" (55.88cm)	31" (78.74cm)	21" (53.34cm)
XL	24" (60.96cm)	32" (81.23cm)	23" (58.42cm)
XXL	26" (66.04cm)	33" (83.82cm)	25" (63.5cm)



T SHIRTS

65



PRODUCT LINE	SIZE	MATERIAL
T-SHIRTS	S - XXL	100% Pre Shrunk Cotton

STYLE	COLOR
#JTM 17231 Stand-Up League	Blue



STYLE	COLOR
#JTM 17233 Sit Down League	Blue



STYLE	COLOR
#JTM 17232 Freestyle League	Blue



STYLE	COLOR
#JTM 17234-RD Jet Tee	Red/ Black



STYLE	COLOR
#JTM 18209 Hexo-Jet	Black



STYLE	COLOR
#JTM 18207 Linear Tee	White



STYLE	COLOR
#JTM 17252 Label Tee	Black

T-SHIRTS

- + 100 % Pre Shrunk Cotton
- + Ribbed collar
- + Ring spun, no side sewn seams
- + Zig-Zag hem sewn for extra durability
- + Printed in California USA
- + Retail spec cut to ensure a true fit

MEN'S T-SHIRT SIZE CHART

Size	Body Width	Body Length	Shoulder Width (Seam to Seam)
S	18" (45.72cm)	27" (68.58cm)	17" (43.18cm)
M	20" (50.8cm)	29" (73.66cm)	19" (48.26cm)
L	22" (55.88cm)	31" (78.74cm)	21" (53.34cm)
XL	24" (60.96cm)	32" (81.23cm)	23" (58.42cm)
XXL	26" (66.04cm)	33" (83.82cm)	25" (63.5cm)





PRODUCT LINE	COLOR	MATERIAL
T-SHIRTS	S - XXL	100% Pre Shrunk Cotton

STYLE	COLOR
#JTM 18207 Linear Tee	White



STYLE	COLOR
#JTM 18201 Tron Tee	White



STYLE	COLOR
#JTM 18202 Metrix Tee	Grey



STYLE	COLOR
#JTM 18203 Tropic Tee	Tan



STYLE	COLOR
#JTM 18204 Slant Tee	White



STYLE	COLOR
#JTM 18205 Petrol Tee	Red



STYLE	COLOR
#JTM 18206 Crosshatch Tee	Black

## T-SHIRTS

- + 100 % Pre Shrunk Cotton
- + Ribbed collar
- + Ring spun, no side sewn seams
- + Zig-Zag hem sewn for extra durability
- + Printed in California USA
- + Retail spec cut to ensure a true fit

### MEN'S T-SHIRT SIZE CHART

Size	Body Width	Body Length	Shoulder Width (Seam to Seam)
S	18" (45.72cm)	27" (68.58cm)	17" (43.18cm)
M	20" (50.8cm)	29" (73.66cm)	19" (48.26cm)
L	22" (55.88cm)	31" (78.74cm)	21" (53.34cm)
XL	24" (60.96cm)	32" (81.23cm)	23" (58.42cm)
XXL	26" (66.04cm)	33" (83.82cm)	25" (63.5cm)





PRODUCT LINE	SIZE	MATERIAL
UNISEX PULLOVER HOODIE	S - XXL	Polyester Blend
	STYLE	COLOR
	#JTM 18240-RD	Stacked - Red



STYLE	COLOR
#JTG 18240-BL	Stacked - Blue



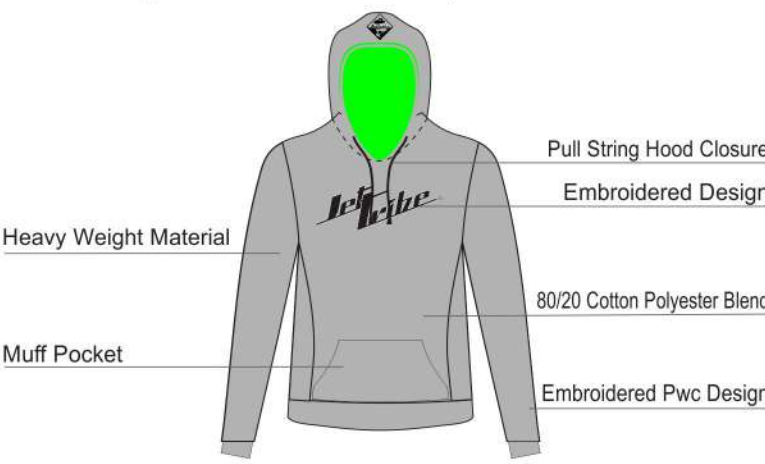
STYLE	COLOR
#JTG 18240-GY	Stacked - Grey



STYLE	COLOR
#JTM 17280-GN	Wire - Green

## HOODIES 70

- Polyester blend with thick heavy material
- Front Muff pocket.
- "Stacked" Style - Embroidered Logo on front and arms
- Double layered micro mesh liner for additional warmth
- Strong plastic string pull-tabs
- "Wire" Style - Silkscreened Graphics



### MENS HOODIE SIZE CHART

Size	Chest Circumference
Small	36" - 37" (91.5cm - 94cm)
Medium	38" - 39" (96.5cm - 99cm)
Large	41" - 43" (104cm - 109cm)
X-Large	45" - 47" (114cm - 119cm)
XX-Large	49" - 51" (124cm - 129.5cm)





PRODUCT LINE	SIZE	MATERIAL
LADIES HOODIE PULLOVER	S - XL	Polyester Blend



STYLE	COLOR
#JTL 18102	White



STYLE	COLOR
#JTL 18103	Maroon



Metal Eyelets

Flat Drawcord

60/40 Cotton/polyester

Front Muff Pocket

1x1 Rib Cuffs  
And Waistband

## LADIES PULLOVER HOODIES

These soft, lightweight sweatshirts are designed and decorated with Rhinestones at the Jettribe HQ in the USA.

They provide both warmth and style while you enjoy your time by the water.

### SIZE CHART

	S	S	M	L	XL	2XL
Body Length	24	25	26	27	28	29
Body Width	18	19	20	21	22	23



LADIES RASHGUARD 73



PRODUCT LINE	SIZE	MATERIAL
LADIES NEWPORT RASHGUARD	S - XL	4 - Way Stretch Lycra Polyester



STYLE	COLOR
#JTL 18444-PK	Pink



STYLE	COLOR
#JTL 18444-PU	Purple

- The Jettribe Rashguard's fade-resistant coloring and design is made to enhance your time on the water.
- Make the most out of your next ride with this high performance and comfortable rashguard.

- With UV Protection, breathable and quick-drying, the Jettribe Rashguard is constructed with 20% Spandex and 80% polyester fabric, which provides lightweight, stretchy, and easy movement for riding PWC and other water activities. The ladies custom cut comfort fit and design offers the ultimate warmth and sunburn prevention for hours of PWC riding.

- **FLAT LOCK STITCHING -**  
Flatlock stitching is an ideal stitching style for watercraft riding gear. The parallel stitching method is perfect for riding gear due to its strength and flexibility. Open to water penetration, the unique seam offers high performance and fast drying times, that complement the rashguard's light, breathable fabric. Count on flat-lock stitching to keep your long or short sleeved guard wearing great every day. The tight fit provides optimal staying power on even the roughest waters.

4-way Stretch  
Polyester Lycra

Interlocking Stitch



Curved  
Woman's Cut



Ultra Violet Sun  
Protection



Flat Lock Sewing

WOMEN'S RASHGUARD SIZE CHART

Women	Height	Weight	Bust	Waist
XS	5'3-5'6 (160cm - 167.5cm)	100-125 (45.36kg - 56.7kg)	30.5 - 33.5 (77.47cm - 85.09cm)	24-27 (61cm - 68.5cm)
S	5'4-5'7 (162.5cm - 170cm)	110-135 (49.9kg - 61.23kg)	31.5 - 34.5 (80cm - 87.63cm)	25-28 (63.5cm - 71.12cm)
M	5'5-5'8 (165cm - 172.5cm)	120-150 (54.43kg - 68.04kg)	32.5 - 36 (82.55cm - 91.44cm)	26-29 (66.04cm - 73.66cm)
L	5'7-5'11 (170cm - 180cm)	140-170 (63.50kg - 77.11kg)	35.5 - 39.5 (90.2cm - 100.33cm)	29-32 (73.66cm - 81.28cm)
XL	5'9-6'0 (175cm - 183cm)	150-185 (68.04kg - 83.91kg)	37 - 40.5 (94cm - 102.87cm)	30-34 (76.2cm - 86.36cm)



LADIES RASHGUARD



PRODUCT LINE	SIZE	MATERIAL
LADIES CUT HYPER RASHGUARD	S - XL	4 - Way Stretch Lycra Polyester



STYLE	COLOR
#JTL 19144GN	Green



STYLE	COLOR
#JTL 19144RD	Red

75

- The Jettribe Rashguard's fade-resistant coloring and design is made to enhance your time on the water.
- Make the most out of your next ride with this high performance and comfortable rashguard.
- With UV Protection, breathable and quick-drying, the Jettribe Rashguard is constructed with 20% Spandex and 80% polyester fabric, which provides lightweight, stretchy, and easy movement for riding PWC and other water activities. The ladies custom cut comfort fit and design offers the ultimate warmth and sunburn prevention for hours of PWC riding.
- **FLAT LOCK STITCHING** - Flatlock stitching is an ideal stitching style for watercraft riding gear. The parallel stitching method is perfect for riding gear due to its strength and flexibility. Open to water penetration, the unique seam offers high performance and fast drying times, that complement the rashguard's light, breathable fabric. Count on flat-lock stitching to keep your long or short sleeved guard wearing great every day. The tight fit provides optimal staying power on even the roughest waters.

4-way Stretch  
Polyester Lycra

Interlocking Stitch



Curved  
Woman's Cut



Ultra Violet Sun  
Protection



Flat Lock Sewing

WOMEN'S RASHGUARD SIZE CHART

Women	Height	Weight	Bust	Waist
XS	5'3-5'6 (160cm - 167.5cm)	100-125 (45.36kg - 56.7kg)	30.5 - 33.5 (77.47cm - 85.09cm)	24-27 (61cm - 68.5cm)
S	5'4-5'7 (162.5cm - 170cm)	110-135 (49.9kg - 61.23kg)	31.5 - 34.5 (80cm - 87.63cm)	25-28 (63.5cm - 71.12cm)
M	5'5-5'8 (165cm - 172.5cm)	120-150 (54.43kg - 68.04kg)	32.5 - 36 (82.55cm - 91.44cm)	26-29 (66.04cm - 73.66cm)
L	5'7-5'11 (170cm - 180cm)	140-170 (63.50kg - 77.11kg)	35.5 - 39.5 (90.2cm - 100.33cm)	29-32 (73.66cm - 81.28cm)
XL	5'9-6'0 (175cm - 183cm)	150-185 (68.04kg - 83.91kg)	37 - 40.5 (94cm - 102.87cm)	30-34 (76.2cm - 86.36cm)

76



STYLE	COLOR
#JTL 19144PU	Purple



STYLE	COLOR
#JTL 19144PK	Pink





PRODUCT LINE	SIZE	MATERIAL
LADIES CUT CASEY 2.0 RASHGUARD	S - XL	4 - Way Stretch Lycra Polyester
STYLE	COLOR	
#JTL 19133	Blue / Pink	
STYLE	COLOR	
#JTL 19178 SWIM SKIRT	Blue / Pink	



PRODUCT LINE	SIZE	MATERIAL
LADIES CUT CASABLANCA RASHGUARD	S - XL	4 - Way Stretch Lycra Polyester
STYLE	COLOR	
#JTL 19132	Black / White	
STYLE	COLOR	
#JTL 19177 SWIM SKIRT	Black / White	

- The Jettribe Rashguard's fade-resistant coloring and design is made to enhance your time on the water.
- Make the most out of your next ride with this high performance and comfortable rashguard.

- With UV Protection, breathable and quick-drying, the Jettribe Rashguard is constructed with 20% Spandex and 80% polyester fabric, which provides lightweight, stretchy, and easy movement for riding PWC and other water activities. The ladies custom cut comfort fit and design offers the ultimate warmth and sunburn prevention for hours of PWC riding.

- **FLAT LOCK STITCHING -** Flatlock stitching is an ideal stitching style for watercraft riding gear. The parallel stitching method is perfect for riding gear due to its strength and flexibility. Open to water penetration, the unique seam offers high performance and fast drying times, that complement the rashguard's light, breathable fabric. Count on flat-lock stitching to keep your long or short sleeved guard wearing great every day. The tight fit provides optimal staying power on even the roughest waters.

4-way Stretch Polyester Lycra

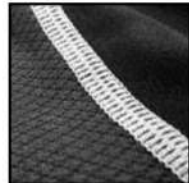
Interlocking Stitch



Curved Woman's Cut



Ultra Violet Sun Protection



Flat Lock Sewing

#### WOMEN'S RASHGUARD SIZE CHART

Women	Height	Weight	Bust	Waist
XS	5'3-5'6 (160cm - 167.5cm)	100-125 (45.36kg - 56.7kg)	30.5 - 33.5 (77.47cm - 85.09cm)	24-27 (61cm - 68.5cm)
S	5'4-5'7 (162.5cm - 170cm)	110-135 (49.9kg - 61.23kg)	31.5 - 34.5 (80cm - 87.63cm)	25-28 (63.5cm - 71.12cm)
M	5'5-5'8 (165cm - 172.5cm)	120-150 (54.43kg - 68.04kg)	32.5 - 36 (82.55cm - 91.44cm)	26-29 (66.04cm - 73.66cm)
L	5'7-5'11 (170cm - 180cm)	140-170 (63.50kg - 77.11kg)	35.5 - 39.5 (90.2cm - 100.33cm)	29-32 (73.66cm - 81.28cm)
XL	5'9-6'0 (175cm - 183cm)	150-185 (68.04kg - 83.91kg)	37 - 40.5 (94cm - 102.87cm)	30-34 (76.2cm - 86.36cm)





PRODUCT LINE	SIZE	MATERIAL
LADIES CUT HOODIE RASHGUARD	S - XL	4 - Way Stretch Lycra Polyester
STYLE	COLOR	
#JTL 19142BK	Black	



PRODUCT LINE	SIZE	MATERIAL
LADIES CUT HOODIE RASHGUARD - STRIPE	S - XL	4 - Way Stretch Lycra Polyester
STYLE	COLOR	
#JTL 19142SP	Black / Pink	

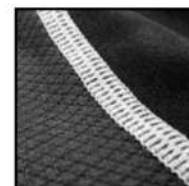
- The Jettribe Rashguard's fade-resistant coloring and design is made to enhance your time on the water.
- Make the most out of your next ride with this high performance and comfortable rashguard.

- With UV Protection, breathable and quick-drying, the Jettribe Rashguard is constructed with 20% Spandex and 80% polyester fabric, which provides lightweight, stretchy, and easy movement for riding PWC and other water activities. The ladies custom cut comfort fit and design offers the ultimate warmth and sunburn prevention for hours of PWC riding.

- **FLAT LOCK STITCHING -**  
Flatlock stitching is an ideal stitching style for watercraft riding gear. The parallel stitching method is perfect for riding gear due to its strength and flexibility. Open to water penetration, the unique seam offers high performance and fast drying times, that complement the rashguard's light, breathable fabric. Count on flat-lock stitching to keep your long or short sleeved guard wearing great every day. The tight fit provides optimal staying power on even the roughest waters.



Ultra Violet Sun Protection



Flat Lock Sewing

WOMEN'S RASHGUARD SIZE CHART

Women	Height	Weight	Bust	Waist
XS	5'3-5'6 (160cm - 167.5cm)	100-125 (45.36kg - 56.7kg)	30.5 - 33.5 (77.47cm - 85.09cm)	24-27 (61cm - 68.5cm)
S	5'4-5'7 (162.5cm - 170cm)	110-135 (49.9kg - 61.23kg)	31.5 - 34.5 (80cm - 87.63cm)	25-28 (63.5cm - 71.12cm)
M	5'5-5'8 (165cm - 172.5cm)	120-150 (54.43kg - 68.04kg)	32.5 - 36 (82.55cm - 91.44cm)	26-29 (66.04cm - 73.66cm)
L	5'7-5'11 (170cm - 180cm)	140-170 (63.50kg - 77.11kg)	35.5 - 39.5 (90.2cm - 100.33cm)	29-32 (73.66cm - 81.28cm)
XL	5'9-6'0 (175cm - 183cm)	150-185 (68.04kg - 83.91kg)	37 - 40.5 (94cm - 102.87cm)	30-34 (76.2cm - 86.36cm)



81



82







PRODUCT LINE	SIZE	MATERIAL
BLOCK Tee	S - XL	100% Pre Shrunk Cotton
STYLE	COLOR	
#JTL 17148-PK	Pink/ Lt. Pink	



PRODUCT LINE	SIZE	MATERIAL
BLOCK Tee	S - XL	100% Pre Shrunk Cotton
STYLE	COLOR	
#JTL 17148-BW	Black/ White	



PRODUCT LINE	SIZE	MATERIAL
Malibu Tee	S - XL	100% Pre Shrunk Cotton
STYLE	COLOR	
#JTL 17145-BL	Caribbean Blue	



PRODUCT LINE	SIZE	MATERIAL
Malibu Tee	S - XL	100% Pre Shrunk Cotton
STYLE	COLOR	
#JTL 17145-GY	Charcoal Grey	



PRODUCT LINE	SIZE	MATERIAL
Est. 1996 Tee	S - XL	100% Pre Shrunk Cotton
STYLE	COLOR	
#JTL 18115-BW	Black/ White	

LADIES SHIRTS

- 100 % Cotton, ringspun combed
- Contrast neck and sleeve binding
- Zig Zag hem sewn for extra durability
- Printed in California USA
- Tagless size label

LADIES SIZE CHART

Sizes	Small	Medium	Large	XLarge
Bust/Chest	16"	17"	18"	19"
FrontLengthHPS	23"	23-1/2"	24"	24-1/2"
Bust	32"- 34"	34"- 36"	36"- 38"	38"- 40"
Waist	24"- 26"	26"- 28"	28"- 30"	30"- 32"





PRODUCT LINE	SIZE	MATERIAL
DIAMOND SHORTS	3, 5, 7, 9, 11, 13	Microfiber Polyester

STYLE	COLOR
#JTL 18106-GY	Grey



STYLE	COLOR
#JTL 18106-TL	Teal



STYLE	COLOR
#JTL 18106-PU	Purple

LADIES BOARD SHORTS

- 100% heavy duty polyester quick dry material
- White shoe-string with classic endcap to reduce fraying
- Built in key loop
- Lanyard D-ring
- Rubber TPR drain hole - so water exits the shorts with no balloon effect
- Reinforced "X" bar stitch throughout
- Graphics applied with sublimation gas fusion, so the material is soft and light to the touch without fading or cracking



Built-in Key Loop  
Classic String Endcap

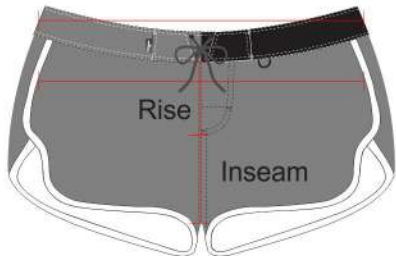
Front



Pocket  
TPR Drain Hole  
Quick Dry Material

Back

SIZING DIAGRAM



Waist  
Hip

WOMEN'S SHORTS SIZE CHART

Size	Waist	Rise	Hip	Inseam
3	29	6.5	33	3
5	30	6.5	34	3
7	31	7	36	3
9	32	8	38	3
11	33	8	39	3
13	36	8	42	3





PRODUCT LINE	SIZE	MATERIAL
HYPER SHORTS	3, 5, 7, 9,11,13	Microfiber Polyester
STYLE	COLOR	
#JTL 19105RD	Red	



STYLE	COLOR
#JTL 19105GN	Green



STYLE	COLOR
#JTL 19105PK	Pink

# LADIES BOARD SHORTS DNA

- 100% heavy duty polyester quick dry material
- White shoe-string with classic endcap to reduce fraying
- Built in key loop
- Lanyard D-ring
- Rubber TPR drain hole - so water exits the shorts with no balloon effect
- Reinforced "X" bar stitch throughout
- Graphics applied with sublimation gas fusion, so the material is soft and light to the touch without fading or cracking



Built-in Key Loop  
Classic String Endcap

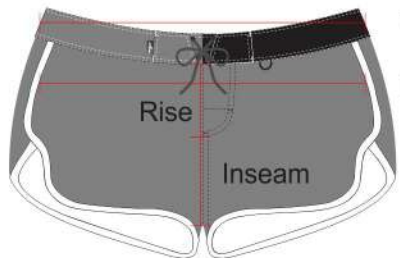


Pocket  
TPR Drain Hole  
Quick Dry Material

Front

Back

## SIZING DIAGRAM



Waist  
Hip

## WOMEN'S SHORTS SIZE CHART

Size	Waist	Rise	Hip	Inseam
3	29	6.5	33	3
5	30	6.5	34	3
7	31	7	36	3
9	32	8	38	3
11	33	8	39	3
13	36	8	42	3



STYLE	COLOR
#JTL 19105PU	Purple



STYLE	COLOR
#JTL 19105GY	Grey





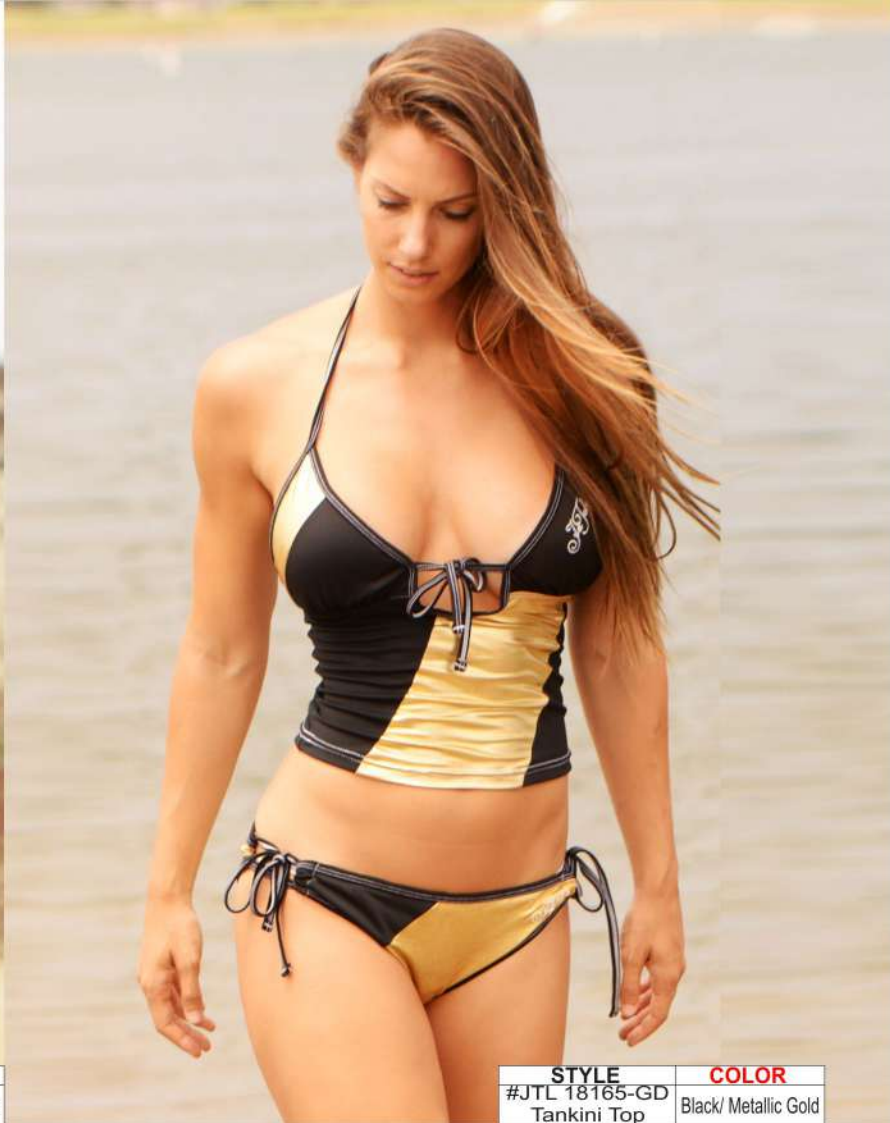




PRODUCT LINE	SIZE	MATERIAL
SWIMWEAR - METALLIC	S - XL	Stretch Polyester



STYLE	COLOR
JTL 18164-GD Bikini 2-Piece Set	Black/ Metallic Gold



STYLE	COLOR
#JTL 18165-GD Tankini Top	Black/ Metallic Gold



STYLE	COLOR
#JTL 18164-SL Bikini 2-Piece Set	Black/ Metallic Silver



STYLE	COLOR
#JTL 18165-SL Tankini Top	Black/ Metallic Silver

SWIM WEAR

- Embroidered Jettribe logo
- Material: 80% Polyester 20% Nylon
- String tie neck and chest closure
- Bikini is sold as 2-piece set
- Tankini Top is sold separately.

Sizes	Dress Size (US) Equivalent	Bust Inches	Hips Inches
Small	4-6	34"-35	36.5-37.5
Medium	8-10	36-37	38.5-39.5
Large	12-14	38.5-40	41-42.5
Xlarge	16	42	45





PRODUCT LINE	SIZE	MATERIAL
SWIMWEAR - METALLIC	S - XL	Stretch Polyester



STYLE	COLOR
JTL 18165-PU Tankini Top	Black/ Metallic Purple



STYLE	COLOR
#JTL 18164-PU Bikini 2-Piece Set	Black/ Metallic Purple



STYLE	COLOR
#JTL 18165-RD Tankini Top	Black/ Metallic Red



STYLE	COLOR
#JTL 18164-RD Bikini 2-Piece Set	Black/ Metallic Red

SWIM WEAR

- Embroidered Jettribe logo
- Material: 80% Polyester 20% Nylon
- String tie neck and chest closure
- Bikini is sold as 2-piece set
- Tankini Top is sold separately.

Sizes	Dress Size (US) Equivalent	Bust Inches	Hips Inches
Small	4-6	34"-35	36.5-37.5
Medium	8-10	36-37	38.5-39.5
Large	12-14	38.5-40	41-42.5
Xlarge	16	42	45



95



96



97



PRODUCT LINE	SIZE	MATERIAL
SWIMWEAR - MOROCCO	S - XL	Stretchy Polyester
STYLE	COLOR	
JTL 18180 - Bikini Set	Black/White	



STYLE	COLOR
JTL 17195 - Bikini Set	Black / White



STYLE	COLOR
JTL 17194 - Bikini Set	Black / Pink

98

SWIM WEAR

- Material: 80% Polyester 20% Nylon
- Sublimation Jettribe logo
- Solid arm straps, string tie bottoms
- Bikini is sold as 2-piece set

Sizes	Dress Size (US) Equivalent	Bust Inches	Hips Inches
Small	4-6	34"-35	36.5-37.5
Medium	8-10	36-37	38.5-39.5
Large	12-14	38.5-40	41-42.5
Xlarge	16	42	45









PRODUCT LINE	SIZE	MATERIAL
SWIMWEAR - HAVASU	S - XL	Stretchy Polyester



STYLE	COLOR
JTL 17189 - Bikini Set	Dark Pink / Black



STYLE	COLOR
JTL 17190 - Bikini Set	Black / White

SWIM WEAR

- Women sexy cheeky bottom with fully lined, high leg cut.
- Brazilian top, suitable for small chest customers
- Bottom has decorative ties on the sides
- Material: Polyester
- Top has no padding

Sizes	Dress Size (US) Equivalent	Bust Inches	Hips Inches
Small	4-6	34"-35	36.5-37.5
Medium	8-10	36-37	38.5-39.5
Large	12-14	38.5-40	41-42.5
Xlarge	16	42	45







105



PRODUCT LINE	SIZE	MATERIAL
SWIMWEAR - MISSION BAY	S - XL	Stretchy Polyester



STYLE	COLOR	STYLE	COLOR
JTL 17120-BK Tankini Top	Black/White	JTL 17123-BK Swim Skirt	Black/White



106

STYLE	COLOR
JTL 17186 2pc Bikini	Black/White

SWIM WEAR

- Embroidered Jettribe logo
- Material: 80% Polyester 20% Nylon
- String tie neck and chest closure
- Bikini is sold as 2-piece set
- Tankini Top is sold separately.

Sizes	Dress Size (US) Equivalent	Bust Inches	Hips Inches
Small	4-6	34"-35	36.5-37.5
Medium	8-10	36-37	38.5-39.5
Large	12-14	38.5-40	41-42.5
Xlarge	16	42	45



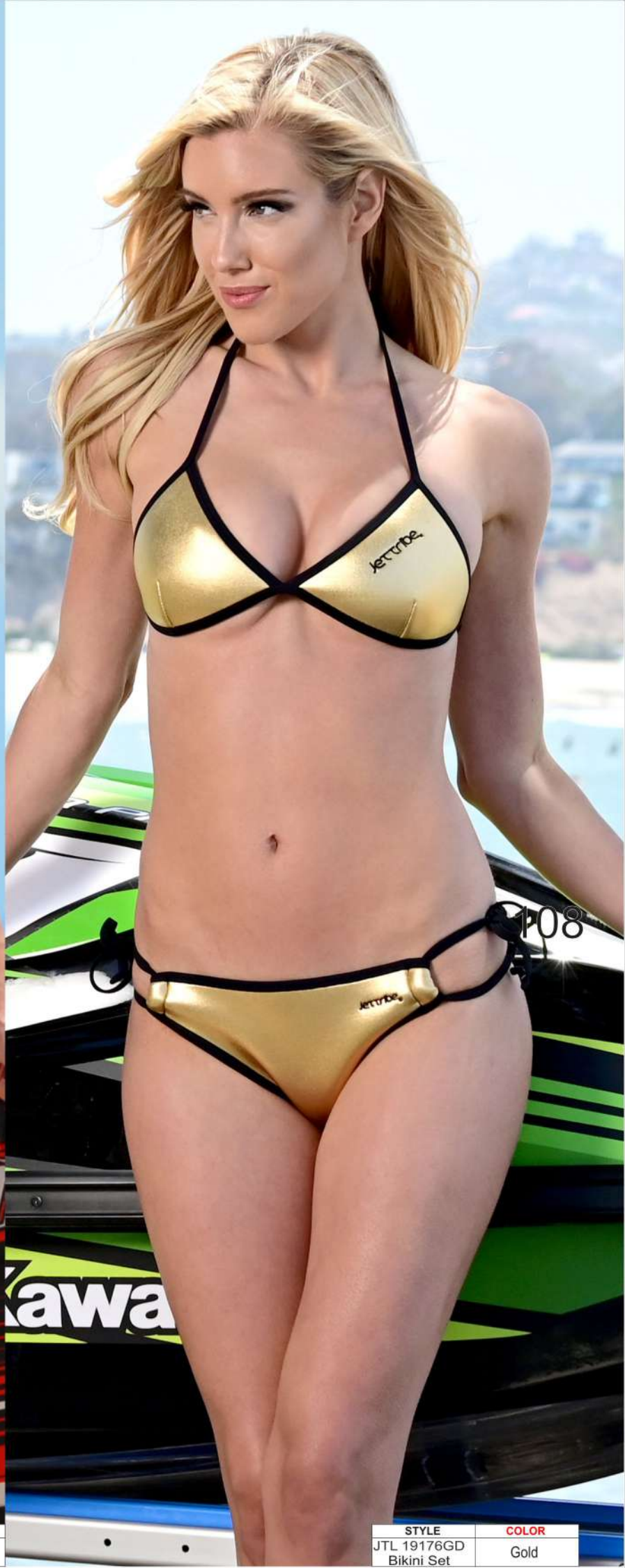
107



PRODUCT LINE	SIZE	MATERIAL
NEO TRIANGLE BIKINI SET	S - XL	Stretchy Polyester



STYLE	COLOR
JTL 19176BK Bikini Set	Black



STYLE	COLOR
JTL 19176GD Bikini Set	Gold

108

SWIM WEAR

- Embroidered Jettribe logo
- Material: 80% neoprene Polyester 20% Nylon
- Bottom: string side closures
- Top: string tie neck and back closure
- Bikini is sold as 2-piece set

Sizes	Dress Size (US) Equivalent	Bust Inches	Hips Inches
Small	4-6	34"-35	36.5-37.5
Medium	8-10	36-37	38.5-39.5
Large	12-14	38.5-40	41-42.5
Xlarge	16	42	45



109



PRODUCT LINE	SIZE	MATERIAL
GLITTER TRIANGLE	S - XL	Stretchy Polyester



PRODUCT LINE	SIZE	MATERIAL
GLITTER TRIANGLE	S - XL	Stretchy Polyester
STYLE	JTL 19175PK	COLOR
	Bikini Set	Pink



110

PRODUCT LINE	SIZE	MATERIAL
STRIPE TRIANGLE	S - XL	Stretchy Polyester
STYLE	JTL 19174	COLOR
	Bikini Set	Black/Pink

SWIM WEAR

- Screen-printed Jettribe Logos
- Bikini is sold as 2-piece set
- Material: 80% Polyester 20% Nylon
- Top: Solid straps

Sizes	Dress Size (US) Equivalent	Bust Inches	Hips Inches
Small	4-6	34"-35	36.5-37.5
Medium	8-10	36-37	38.5-39.5
Large	12-14	38.5-40	41-42.5
Xlarge	16	42	45



TRAVEL GEAR BAG

111



PRODUCT LINE	SIZE	MATERIAL
NIGHT HAULER SEMI-DRY BAG	30"H x 87"L x 42"W	Nylon And Polyester
#JTA 19413	Black	



PRODUCT LINE	SIZE	MATERIAL
MIDNIGHT PACK	13.5"H x 6"L x 20"W	Nylon And Polyester
#JTA 19411BK	Black	

- Size 13.5"H x 6"L x 20"W (34.29 x 15.24 x 50.8cm)
- Ideal for a weekend trip
- Honeycomb nylon with PVC dipped tauperline
- 4 individual compartments
- Fits 17" laptop
- Lined, padded glasses pocket
- Tough YKK #10 zippers
- Dual side compression straps
- Dual side elastic neoprene water bottle pockets
- Front rubber TPR logo
- Abrasion resistant bottom panel
- Built in yolk carrying handle
- Dual adjustable shoulder straps
- Compression molded EVA back support



PRODUCT LINE	SIZE	MATERIAL
BLACK OPS PACK	13.5"H x 6.5"L x 17.5"W	Nylon And Polyester
#JTA 19412BK	Black	

- Size 13.5"H x 6.5"L x 17.5"W (30.48 x 16.51 x 44.45cm)
- Ideal for a day trip
- Honeycomb nylon with PVC dipped yauperline
- 3 individual compartments
- Fits 15" laptop
- Lined, padded glasses pocket
- Tough YKK #10 zippers
- Dual side elastic neoprene water bottle pockets
- Front rubber TPR logo
- Abrasion resistant bottom panel
- Built in yolk carrying handle
- Dual adjustable shoulder straps
- Compression molded EVA back support
- Top opening main chamber for easy access



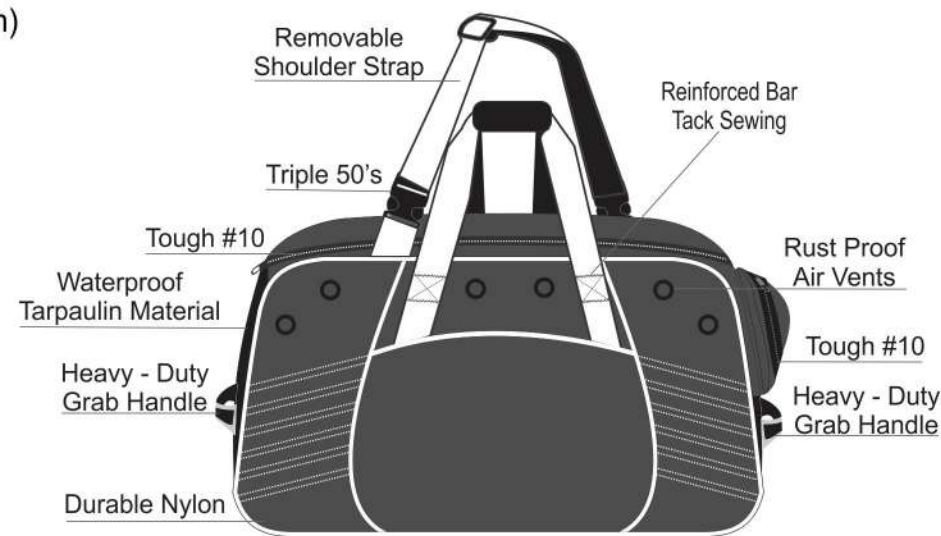
112

PRODUCT LINE	SIZE	MATERIAL
STEALTH TEAM TRAVEL BAG	17"H x 30"L x 14"W	Nylon And Polyester
#JTA 19490	Black	

TRAVEL GEAR BAG

- Size 30"L x 14"W x 17"H (78.2 x 35.5 x 43.1 cm)
- Virtually Waterproof Tarpaulin material throughout
- Internal divider including 1 pocket
- Grommets for ventilation
- 1 external zippered pocket
- Straps for hand-carrying
- Detachable and padded shoulder strap

GEAR BAG DNA





# SHOULDER GEAR BAG 113



PRODUCT LINE	SIZE	MATERIAL
24K TEAM TRAVEL BAG	17"H x 30"L x 14"W	Nylon And Polyester
		
STYLE		COLOR
#JTA 19491		Gold



PRODUCT LINE		SIZE	MATERIAL
EDGE TEAM TRAVEL DUFFEL BAG		17"H x 30"L x 14"W	Nylon And Polyester
STYLE		COLOR	
#JTA 19480RD		Red	

114



STYLE	COLOR
#JTA 19480GY	Grey



STYLE	COLOR
#JTA 19480GN	Green



HEAD WEAR



PRODUCT LINE	SIZE	MATERIAL
HATS - SNAPBACK	One Size	Polyester

STYLE	COLOR
#JTA 18321 Medalion - Stand-Up	Black

STYLE	COLOR
#JTA 18322 Medalion - Freestyle	Black

STYLE	COLOR
#JTA 18320 Medalion - Sit-Down	Black

STYLE	COLOR
#JTA 18327-PK Bright Hat	Pink/ White

STYLE	COLOR
#JTA 18327-BL Bright Hat	Blue/ Black

STYLE	COLOR
#JTA 18325 League Air - Stand-Up	Black

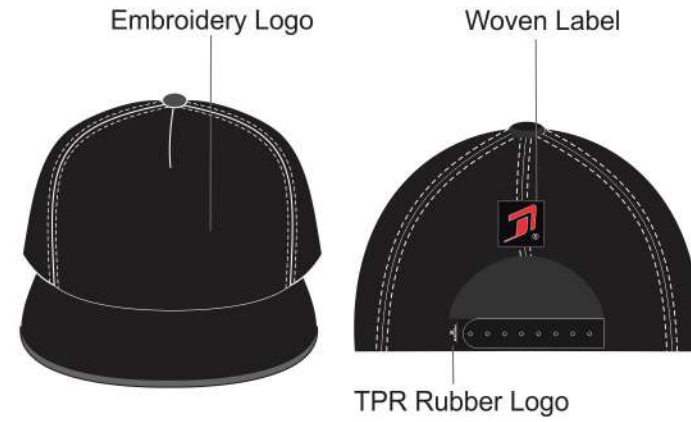
STYLE	COLOR
#JTA 18326 League Air - Freestyle	Black

STYLE	COLOR
#JTA 18324 League Air - Sit-Down	Black

STYLE	COLOR
#JTA 18328-BK Stacked 2.0	Black

STYLE	COLOR
#JTA 18323 Scroll	Grey/ Black

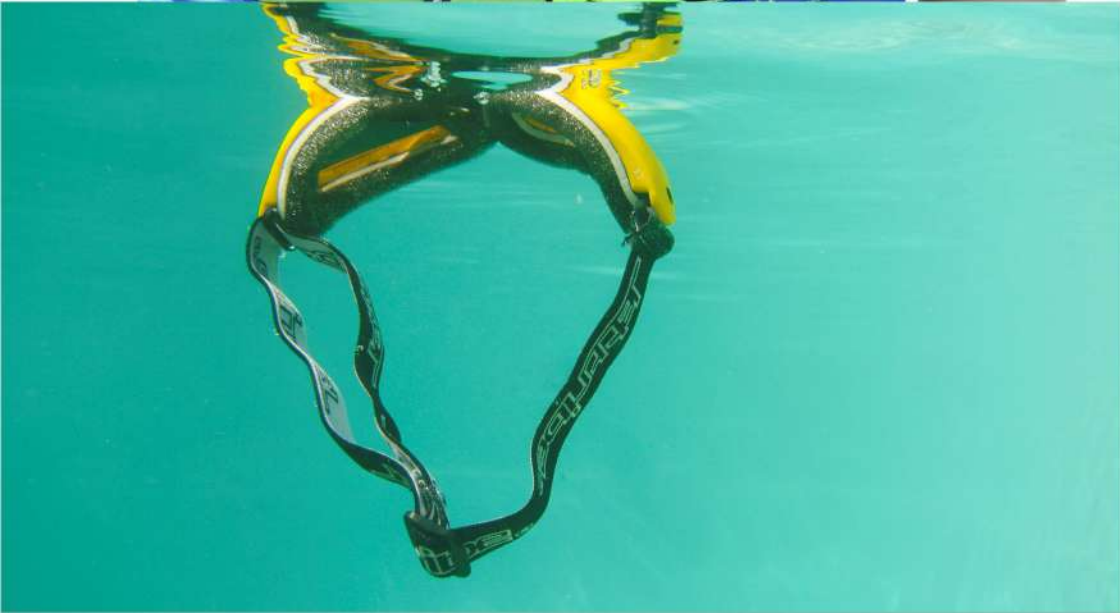
FLAT BRIM HAT DNA





# GOOGLES

117



PRODUCT LINE	SIZE	MATERIAL
--------------	------	----------

CLASSIC GOGGLES	6 1/8" Wide (16cm)	Polycarbonate Lens, ABS Plastic Frame
-----------------	--------------------	--

- The Original PWC floating goggles.
- Dual layer of foam - open cell upper layer for comfort and flotation and a closed cell high density EVA foam for durability.
- Shatter-resistant polycarbonate lenses. 100% UV protection and CE certified.
- Adjustable Jettribe elastic head band.
- Multiple upper and lower air vents that allow airflow, reducing fogging.
- Mesh fabric storage bag included
- Measurement from temple to temple 6 1/8"



STYLE	COLOR
-------	-------

#JTA 19328	Gold Frame/Smoke Lens
------------	-----------------------



STYLE	COLOR
-------	-------

#JTA 19329	Chrome Frame/Smoke Lens
------------	-------------------------



STYLE	COLOR
-------	-------

#JTA 19331	Blue Camo/Smoke Lens
------------	----------------------



STYLE	COLOR
-------	-------

#JTA 11311	Green Frame/Amber Lens
------------	------------------------



STYLE	COLOR
-------	-------

#JTA 071303	Blue Frame/Smoke Lens
-------------	-----------------------



STYLE	COLOR
-------	-------

#JTA 11303	Houndstooth Frame/Smoke Lens
------------	------------------------------



STYLE	COLOR
-------	-------

#JTA 16326	Slate Frame/Smoke Lens
------------	------------------------



STYLE	COLOR
-------	-------

#JTA 16319	Pink Neon Frame/Smoke Lens
------------	----------------------------



STYLE	COLOR
-------	-------

#JTA 071304	Black Frame/Amber Lens
-------------	------------------------



STYLE	COLOR
-------	-------

#JTA 071301	Red Frame/Smoke Lens
-------------	----------------------



STYLE	COLOR
-------	-------

#JTA 071302	Yellow Frame/Smoke Lens
-------------	-------------------------



STYLE	COLOR
-------	-------

#JTA 16318	Circuit Frame/Smoke Lens
------------	--------------------------



STYLE	COLOR
-------	-------

#JTA 16320	Orange Neon Frame/Smoke Lens
------------	------------------------------



STYLE	COLOR
-------	-------

#JTA 071305	Black Frame/Smoke Lens
-------------	------------------------



STYLE	COLOR
-------	-------

#JTA 11301	White Frame/Smoke Lens
------------	------------------------



STYLE	COLOR
-------	-------

#JTA 13305	Silver Frame/Smoke Lens
------------	-------------------------



STYLE	COLOR
-------	-------

#JTA 16322	Green Neon Frame/Smoke Lens
------------	-----------------------------

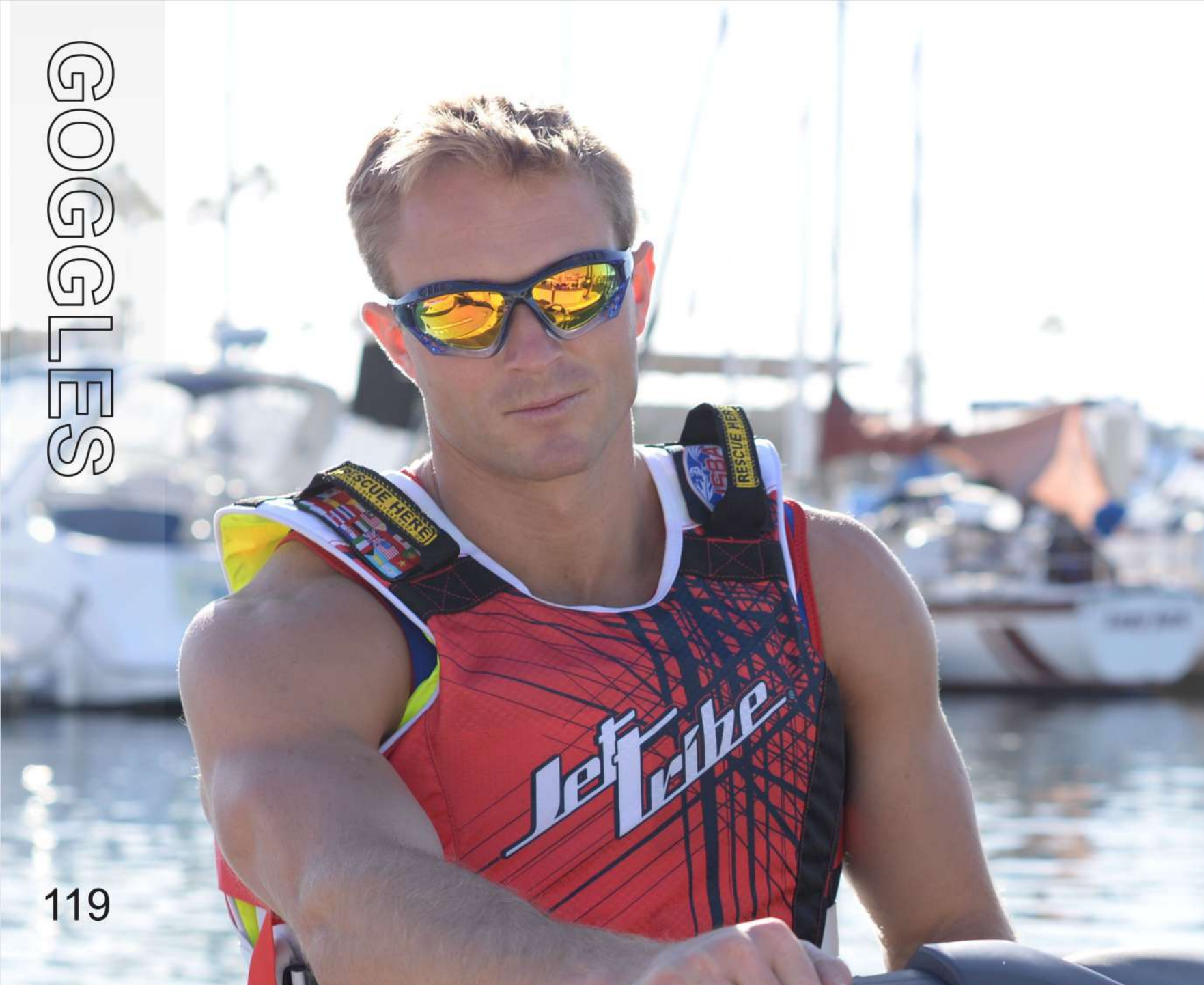


STYLE	COLOR
-------	-------

#JTA 16321	Yellow Neon Frame/Smoke Lens
------------	------------------------------

118





PRODUCT LINE	SIZE	MATERIAL
PRO GOGGLES	6 5/8" Wide (17cm)	Polycarbonate Lens, ABS Plastic Frame

- Goggles with cool wrap around shades and goggle strap attached, the best of both worlds.
  - Shatter-resistant polycarbonate lenses with REVO (Polarized) Coating.
  - 100% UV protection and CE certified.
  - Adjustable Jettribe elastic head band.
  - Multiple upper and lower air vents that allow airflow, reducing fogging.
  - Included Re-Usable Case.
  - Measurement from temple to temple 5 5/8"
- NOTE: This style goggles Does Not Float.



STYLE	COLOR
#JTA 091301	Black Fade Frame/Revo Lens



STYLE	COLOR
#JTA 11312	Navy Blue Fade Frame/Revo Lens



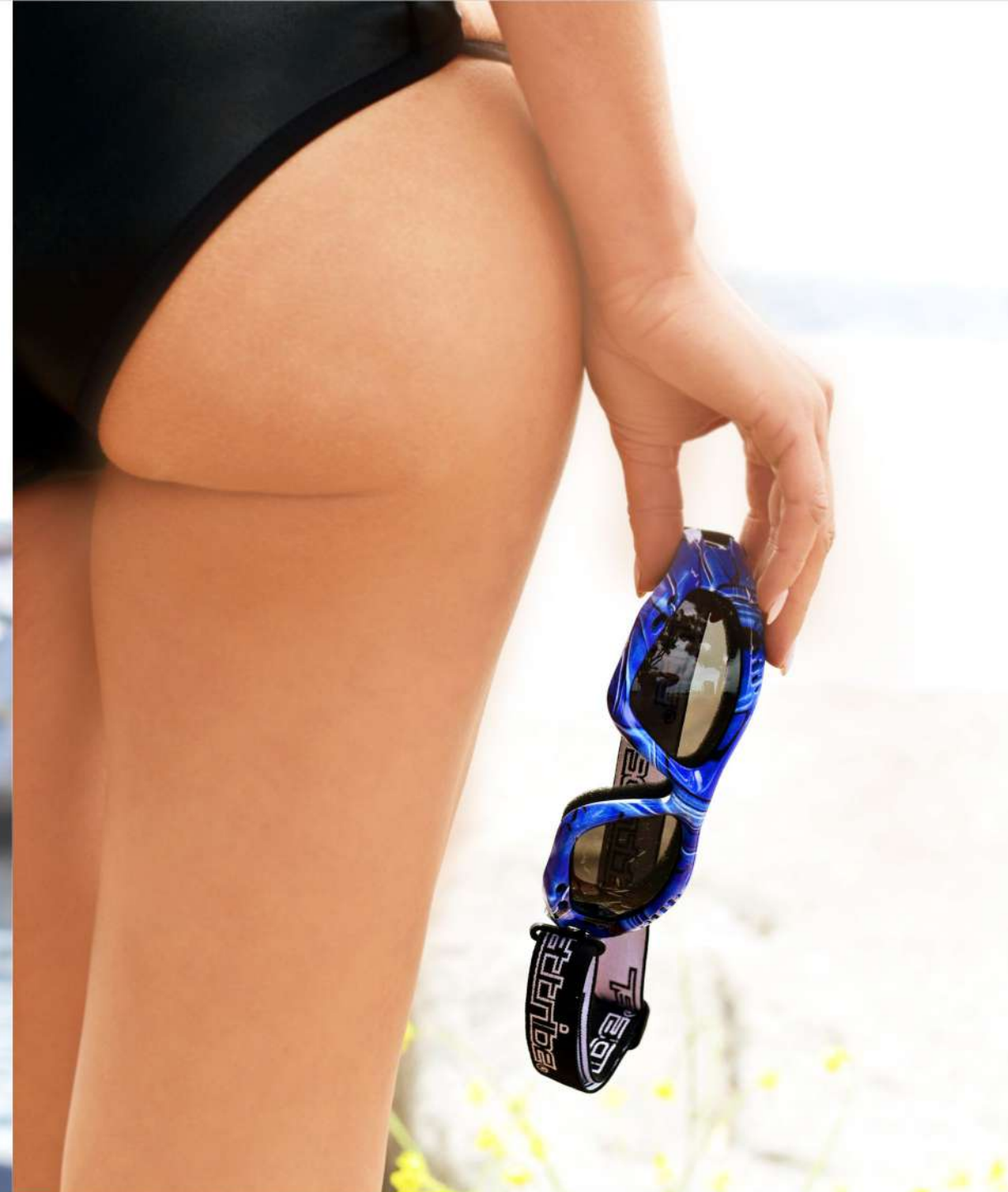
STYLE	COLOR
#JTA 11314	Green Fade Frame/Revo Lens



STYLE	COLOR
#JTA 11313	Red Fade Frame/Revo Lens



STYLE	COLOR
#JTA 13312	Tortise Shell Frame/Revo Lens



STYLE	COLOR
#JTA 11305	Gun Metal Frame/Smoke Lens



STYLE	COLOR
#JTA 12304	Skull Frame/Smoke Lens



STYLE	COLOR
#JTA 19312	Camo Frame/Smoke Lens



STYLE	COLOR
#JTA 13308	Marble Frame/Smoke Lens



STYLE	COLOR
#JTA 13309	Lime Metallic Frame/Smoke Lens



STYLE	COLOR
#JTA 11304	Carbon Fiber Frame/Smoke Lens



STYLE	COLOR
#JTA 19310	Marble Blue Frame/Smoke Lens



STYLE	COLOR
#JTA 19315	Marble Purple Frame/Smoke Lens



STYLE	COLOR
#JTA 19311	Marble Red Frame/Smoke Lens

PRODUCT LINE	SIZE	MATERIAL
EXPERT GOGGLES	6 1/2" Wide (16.5cm)	Polycarbonate Lens, ABS Plastic Frame

- PWC floating goggles
- Dual layer of foam - open cell upper layer for comfort and flotation
- and a closed cell highdensity EVA foam for durability
- Shatter-resistant polycarbonate lenses
- 100% UV protection and CE certified
- Adjustable Jettribe elastic head band
- Multiple upper and lower air vents that allow airflow, reducing fogging
- Includes reusable case
- Measurement from temple to temple 6 1/2"





# GOOGLES

121

PRODUCT LINE	SIZE	MATERIAL
SPARK GOGGLES	6" Wide (15cm)	Polycarb Lens ABS Plastic Frame



STYLE	COLOR
#JTA 13315	Blue Frame/Smoke Lens



STYLE	COLOR
#JTA 13314	Orange Frame/Smoke Lens



STYLE	COLOR
#JTA 13313	Magenta Frame/Smoke Lens



STYLE	COLOR
#JTA 13316	Green Frame/Smoke Lens



STYLE	COLOR
#JTA 13320	Black Frame/Smoke Lens



PRODUCT LINE	SIZE	MATERIAL
CLASSIC GOGGLES -Youth/ Small	5 3/8" Wide (14cm)	Polycarbonate Lens, ABS Plastic Frame

STYLE	COLOR
#JTA 11310	White Frame/Smoke Lens

- The Original PWC floating goggles.
- Dual layer of foam - open cell upper layer for comfort and flotation and a closed cell high density EVA foam for durability.
- Shatter-resistant polycarbonate lenses. 100% UV protection and CE certified.
- Adjustable Jettribe elastic head band.
- Multiple upper and lower air vents that allow airflow, reducing fogging.
- Mesh fabric storage bag included
- Measurement from temple to temple 6 1/8"

122



Converts to Sunglasses



Converts to Sunglasses



Converts to Sunglasses



STYLE	COLOR
#JTA 19313	Marble Red/Smoke Lens



STYLE	COLOR
#JTA 13317	Black-White Frame/Smoke Lens



STYLE	COLOR
#JTA 13319	Matte Black Frame/Smoke Lens



Converts to Sunglasses



STYLE	COLOR
#JTA 13318	Black-Alum Frame/Smoke Lens

PRODUCT LINE	SIZE	MATERIAL
HYBRID GOGGLES	5.25" Wide (13cm)	Polycarb Lens ABS Plastic Frame

- These goggles measure 6" from temple to temple.
- Goggle Strap is easily removable for replacement with Sunglasses Arms (included)
- Shatter-proof polycarbonate Lens
- 100% UV Protection and CE Certified
- Goggles will Float!



GOOGLES



PRODUCT LINE	SIZE	MATERIAL
HELMET GOOGLES	ONE SIZE	Polycarb Lens ABS Plastic Frame



DEEP SET HELMET GOOGLES

STYLE	COLOR
#JTA 12309	Black Frame/Revo Lens



CARBON FIBER HELMET GOOGLES

STYLE	COLOR
#JTA 11321	Black Frame/Revo Lens



ICICLE HELMET GOOGLES

STYLE	COLOR
#JTA 11322	Clear White Frame/Revo Lens

PRODUCT LINE  
REPLACEMENT PARTS



STYLE	DESCRIPTION
#JTA 12313	Fog Off Anti-Fog Spray



STYLE	DESCRIPTION
#JTA 11320	Expert/Pro Goggles Case



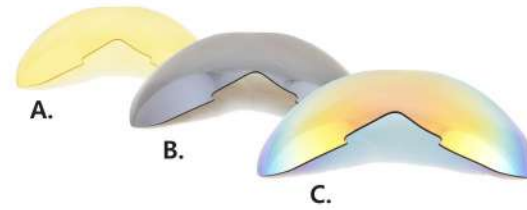
STYLE	DESCRIPTION
#JTA 11345	Classic Goggles Mesh Bag



STYLE	DESCRIPTION
#JTA 11331	Expert Goggles Strap



STYLE	DESCRIPTION
#JTA 11330	Classic Goggles Strap



STYLE	COLOR
#JTA 11323	Helmet Goggles Lens - Amber
STYLE	COLOR
#JTA 11325	Helmet Goggles Lens - Revo
STYLE	COLOR
#JTA 11326	Helmet Goggles Lens - Smoke



STYLE	DESCRIPTION
#JTA 90303	Classic Goggles Pin



STYLE	DESCRIPTION
#JTA 11455	Helmet Goggles Case



STYLE	DESCRIPTION
#JTA 16360	Hybrid Goggles Strap for #13317, 13318



STYLE	DESCRIPTION
#JTA 16361	Hybrid Goggles Strap for #13319



PRODUCT LINE	SIZE
GOOGLES DISPLAY STAND	6.5" X 6.5" X 20.5"H (16.5CM X 16.5CM X 52CM)

STYLE	COLOR
#JTA 11324	White/Clear



STYLE	DESCRIPTION
#JTA 16363	Hybrid Goggles Arms/ Temples (2) for #13318



STYLE	DESCRIPTION
#JTA 16362	Hybrid Goggles Arms/ Temples (2) for #13317



STYLE	DESCRIPTION
#JTA 16364	Hybrid Goggles Arms/Temples (2) for #13319

124



COVER DNA

Gas flap opening on ( most models).

Weather and Water= Resistant-Generation II Nylon with 3 layers of PU coating underneath.

Our " Loop N Draw " tight System does not need any metal hooks ! Yeah, we are goods ! Thinking outside the box.

No exposed seams.All panels are finished with Nylon binding and triple stitched with Nylon thread for unbeatable shear toughness!

Fat, adjustable shock cords are sewn full- length on the watercraft along the hem.

For added strength, tie downs are sewn with "X" box over our tough PVC material.

Tough 2 inch tie down 4 total: 2 on the sides & 2 in the rear ( Sit Downs) Stand ups:Only 1 on the side, 2 on the rear.

Gas flap opening on ( most models).

Weather and Water Resistant Generation II Nylon with 3 layers of PU coating underneath.

No exposed seams.All panels are finished with Nylon binding and triple stitched with Nylon thread for unbeatable shear toughness!

For added strength, tie downs are sewn with "X" box over our tough PVC material.

Tough 2 inch tie down 4 total: 2 on the sides & 2 in the rear ( Sit Downs) Stand ups:Only 1 on the side, 2 on the rear.

Our " Loop N Draw " tight System does not need any metal hooks ! Yeah, we are goods ! Thinking outside the box.



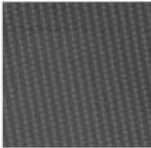
Gas flap opening on ( most models).



For added strength, tie downs are sewn with "X" box over our tough PVC material.



Tough 2 inch tie down 4 total: 2 on the sides & 2 in the rear ( Sit Downs) Stand ups:Only 1 on the side, 2 on the rear.



Front nose pin & front lower chin are reinforced with Nylon material.



Built with Our proprietary Gen II Fade and Sun resistant Nylon !



Fat, adjustable shock cords are sewn full- length on the watercraft along the hem.



Nose pin opening are reinforced with tough Nylon material. Not available for all crafts.



Internal Identification Tag.



Soft Nytex material Lines the hood area to prevent scratching of your PWC's paint.



Our " Loop N Draw " tight System does not need any metal hooks ! Yeah, we are goods ! Thinking outside the box.



Tough, oversized, 1.5 feet dual nylon webbing straps for side and rear tie downs. Tie downs can attach or release with big 1.5 feet Jettribe snap buckles.



Weather and Water Resistant Generation II Nylon with 3 layers of PU coating underneath.



No exposed seams.All panels are finished with Nylon binding and triple stitched with Nylon thread for unbeatable shear toughness!

PWC PREMIUM COVER

SEADOO SITDOWN

XP (97 - 02), XP Di (03-04)	SDO 03003
RX (00 - 02) Rx Di (00- 03) RXX (01)	SDO 03005
XP (93-96),SP (93-99), SPX (93-99)	SDO 03006
RXP (05-07); RXP-X (2004-11)	SDO 03010
LRV (99-03), LRV Di (99-03)	SDO 03011
GTX (96-02), GTX Di (00-01), GTX RFi (97-02) GTX Ltd (96-01), Gti (97-00)	SDO 03014
Gti (01-05), GTS (01-05), Gti LE RFi (01-05) Gti Rfi (01-05), Gti LE (01-05)	SDO 03015
3- D (04-08)	SDO 03017
GTX-LTD (04-08), GTX Di (02-03) GTX 4-TEC SUPERCHARGED (03-06) RXT (05-09), RXT-X 260 (08-10) GTX 4-TEC (02-06),GTX WAKE BOARD EDTN. (04-09) GTX (07-08), GTX LTD (07-08) GTX WAKE (07-08) GTX WAKE, WAKE PRO 215 (08-09), WAKE 155 (08-10)	SDO 03018
Gti (06-10), Gti SE 130, 155 (06-10)	SDO 03019
GTX & GTS-S 155 (2012-17) Suspension GTX-Ltd iS 215 & 260 (09-14) Suspension RXT Is 260 (09-12), RXT-X aS 260 (10-11)	SDO 03021
RXT-X 260, RXT 260 (2011) No suspension WAKE 155 (2011-20) WAKE PRO 215 (2010-17) GTX 155/215 (2009-13) [Non IS Model/ no suspension] GTS 130, GTI 130/155, RENTAL, GTI SE, GTI Ltd 155 (2011-20)	SDO 03022
GTR 215, GTR 230 (2012-20)	SDO 03023
RXP-X 260 (2012-20), RXP-X 300 (2017-20)	SDO 03024
RXT, RXT-X 260 "AS" (2011-16) RXT-X 300 (2017)Suspension / Non Suspension	SDO 03025
SPARK 2-SEATER (2014-20) ; Trixx 2-UP	SDO 03026
SPARK 3-SEATER (2014-20) ; Trixx 3-UP	SDO 03027
RXT, RXT-X, GTX, WAKE PRO (2018-2020)	SDO 03030
FISH PRO 3-SEATER (2019-20)	SDO 03031

YAMAHA STAND UP

Super Jet 700 -701 (1996-2020) 'Round Nose'	YMH 04003
Super Jet 650 (90-93), Super Jet 700 (94-95) 'Square Nose'	YMH 04009

YAMAHA SITDOWN

GP 1200R (00-02), GP 1300R (03-08), GP 800R (01-05)	YMH 04001
GP 1200 (97-99) GP 760-800 (97-00)	YMH 04002
XL 700 (99-03), XL 760 (98-99) XL 1200 (98)	YMH 04006
WAVE BLASTER I 700 (93-96)	YMH 04007
Wave Runner SUV 1200 ( 99 - 03 )	YMH 04008
WaveRunner XL 1200 Ltd (99- 00), XL 800 (2000- 01) XLT 1200 (01-04), XLT 800 (02- 04)	YMH 04011
Wave Runner FX Cruiser (03-06)	YMH 04013
Wave venture 700 (95-98), 760 (97), 1100 (96-97)	YMH 04014
Wave Blaster II 750 (96-97)	YMH 04015
FX-HO (06-11), FX-HO Cruiser (06-11)	YMH 04019
VX 110 Deluxe & Standard (05-12) VX Sport (09-12) VX (09-12), VX Non-Cruiser (05-12)	YMH 04020
FZS (2009-18); FZR (09-16)	YMH 04022
VXS (10-16), VXR (10-14) VX Cruiser (10-14) VX Sport (10-14), VX Deluxe (10-14), V-1 (2015-16)	YMH 04023
FX-HO (2012-20), FX-HO Cruiser (12-20), FX SHO (12-15) FX SHO Cruiser (2012-15); FX SVHU (2014-20), SVHO Cruiser (14-20), SVHO Ltd (2017-20)	YMH 04024
VX (2015-20), VXR (2015-20), VX Cruiser & HO (2015-20), VX Ltd (2016-20), VX Deluxe/ Sport (2015-20) VX-C (2019-20)	YMH 04025
GP 1800R (2017-20)	YMH 04027
EXR (2019-20), EX, EX Sport, Deluxe (2017-20)	YMH 04028

KAWASAKI SITDOWN

ZXI 750 & 900 (95-97),ZXI 1100 (1996-2003)	KWS 05001
Ultra150 (1999-2005), Ultra 130 Di (2001-05)	KWS 05007
900 STX (2001- 05), 1100 STX Di (2002- 03) 1100STX (00-05), 1100STX Sport Tour 1200 STX-R (2002 - 04 ), STX-12F (2003-04)	KWS 05009
STX-15F (2004-20); STX-12F (2005-09) STX-Base (2009-15)	KWS 05011
X2 650 (1986-95)	KWS 05012
STX 900 (99-00), STX 1100 (97-99), STS 900 (01-02)	KWS 05014
Ultra 250X / LX (2007-10), ULTRA 260X / LX (2009-16) "Cruiser Seat" 300 LX & 300 X (2012-16); 310 (2014-20)	KWS 05018

KAWASAKI STAND UP

300 (86-88),440 (72-92), 550SX (90-95), 550 (82-91)	KWS 05002
750SX (92-95),750SXi (95/96/00), 750 SXi PRO (98-01)	KWS 05003
650SX (87-93)	KWS 05004
800SX-R (2003-15) Trinity, Bullet, Warner, JTR, QSM Hulls (2012-18)	KWS 05008
1500 SXR STAND-UP (2017-20)	KWS 05019

Thank you for checking out one of the best PWC covers on the market today. For over a decade Team Jettribe USA racers and professional racers all over the world have relied on Jettribe PWC Premium covers to protect their race skis while traveling throughout the United States and abroad. Besides racers, watercraft enthusiasts rely on our Jettribe PWC covers to protect their skis while in storage or trailering to their favorite riding spots. For over a decade, Jettribe covers have been known for their quality and durability.

Jettribe Premium covers offer the most water resistant,water repellant weather protection for your watercraft, plus our covers are specially built for trailering. Here are some cool features that set our PWC covers above the rest. We added four 1.5" webbing detachable tie downs, plus we can shock cord bungee all around the bottom leading edge. For weather resistance, our materials are specially UV coated with the exclusive (CFM) material that is formulated only for Jettribe! It took us nearly two years to figure out the formulation ! For water resistance the material is coated with three layers of clear PU or PVC packing to keep out the water. All our seems are triple-stitched and finished off with binding. No exposed seams! The inside hood area is lined with soft nytex material to protect your PWC from getting scratched paint. All pin or eye bow areas are reinforced with a tough extra layer of Nylon material. When fueling up, most of our covers have a gas flap opening. Talk is talk, but seeing is believing . Check out our Jettribe covers at your local dealership. Jettribe Covers are a perfect quality, fit, finish and a true work of art !



PWC TOWABLES



PRODUCT LINE	SIZE	MATERIAL
HYPER TRIANGLE 2-PERSON TOWABLE	ONE SIZE	Nylon & Polyester
	STYLE	COLOR
	#JTA 19352	Green



PRODUCT	STYLE	COLOR
EASY TOW CONNECT 1.49" x 13.78" (3.8cm x 35cm)	#JTA 19355	Neon Green



Total Length (75' / 22.86 Meters)

PRODUCT	STYLE	COLOR
TUBE TOWABLE WEBBING (75' / 22.86M)	#JTA 17340	Blue, Black, Green
	STYLE	COLOR
	#JTA 17340-BK	Black
	STYLE	COLOR
	#JTA 17340-GN	Green
	STYLE	COLOR
	#JTA 17340-BL	Blue

127



PRODUCT LINE	SIZE	MATERIAL
HYPER DONUT 1-PERSON TOWABLE	ONE SIZE	Nylon & Polyester
	STYLE	COLOR
	#JTA 19351	Green

128

PRODUCT LINE	SIZE	MATERIAL
REPLACEMENT TOWABLE	ONE SIZE	Nylon & Polyester



PRODUCT	STYLE	COLOR
INNER VALVE REPLACEMENT	#JTA 16354	Black



PRODUCT	STYLE	COLOR
CAUTION FLAG	#JTA 17343	Orange

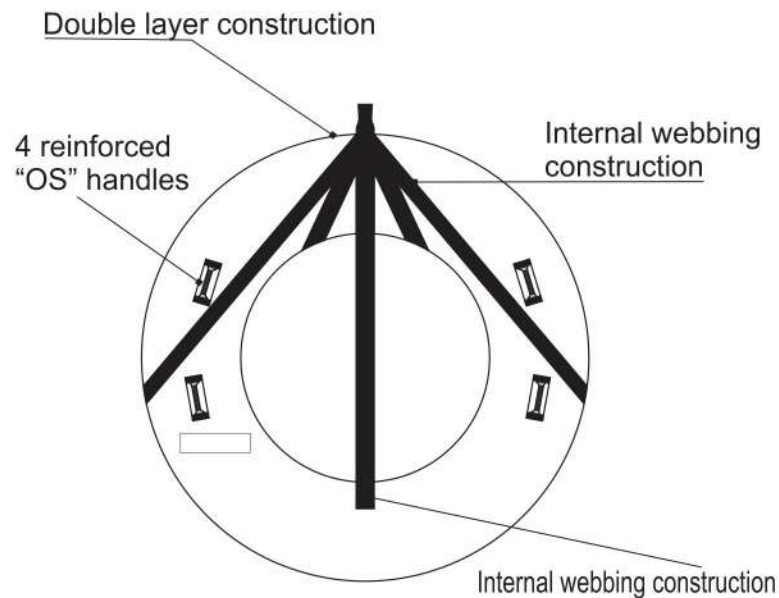
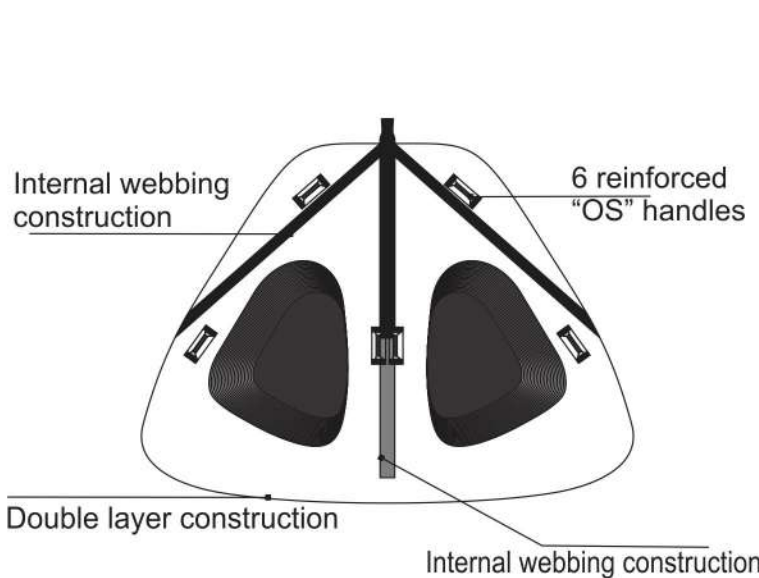


PRODUCT	STYLE	COLOR
TOWABLE 1-PERSON INNER	#JTA 16352	Yellow



PRODUCT	STYLE	COLOR
TOWABLE 2-PERSON INNER	#JTA 16353	Yellow

## TOWABLE DNA







PRODUCT	STYLE	COLOR
EMERGENCY CAUTION FLAG 11.8" x 7.9" (30cm x 20cm)	#JTA 19340	Green



PRODUCT	STYLE	COLOR	PRODUCT	STYLE	COLOR
Buoy 11.2" x 14.5"(28.5 x 38cm)	#JTA 18307-Y	Yellow	Buoy 11.2" x 14.5"(28.5 x 38cm)	#JTA 18307-O	Orange

PRODUCT	STYLE	COLOR
SKI TOW STRAP 1.49" x 14.96" (3.8cm x 38cm)	#JTA 19347GN	Green
PRODUCT	STYLE	COLOR
SKI TOW STRAP 1.49" x 14.96" (3.8cm x 38cm)	#JTA 19347BK	Black
PRODUCT	STYLE	COLOR
SKI TOW STRAP 1.49" x 14.96" (3.8cm x 38cm)	#JTA 19347OR	Orange



3.8 klg 8 lbs

Buoy not included

PRODUCT	STYLE	COLOR
BUOY ANCHOR BAG 0.98" x 246" (2.5cm x 625cm)	#JTA 19335	Red

PRODUCT	STYLE	COLOR
TOW TWENTY - TOW STRAP 20' (50.8cm)	#JTA 19358-GN	Green
PRODUCT	STYLE	COLOR
TOW TWENTY - TOW STRAP 20' (50.8cm)	#JTA 19358-BK	Black
PRODUCT	STYLE	COLOR
TOW TWENTY - TOW STRAP 20' (50.8cm)	#JTA 19358-BL	Blue



ACCESSORIES



PRODUCT	STYLE	COLOR	PRODUCT	STYLE	COLOR	PRODUCT	STYLE	COLOR
PWC ANCHOR BAG (14 kg 30 lbs)	#JTA 19330NY	Neon Green	PWC ANCHOR BAG (14 kg 30 lbs)	#JTA 19330BL	Blue	PWC ANCHOR BAG (14 kg 30 lbs)	#JTA 19330BK	Black



PRODUCT	STYLE	COLOR	PRODUCT	STYLE	COLOR	PRODUCT	STYLE	COLOR
Interchangeable Lanyard Loop	#JTA 14403-BL	Blue	Interchangeable Lanyard Loop	#JTA 14403-YW	Yellow	Interchangeable Lanyard Loop	#JTA 14403-BK	Black
Interchangeable Lanyard Loop	#JTA 14403-NG	Neon Green	Interchangeable Lanyard Loop	#JTA 14403-WH	White	Interchangeable Lanyard Loop	#JTA 14403-GY	Grey
Interchangeable Lanyard Loop	#JTA 14403-RD	Red						

131



PRODUCT	STYLE	COLOR	PRODUCT	STYLE	COLOR	PRODUCT	STYLE	COLOR
PWC DOCK LINE, 2 PIECES 0.98" x 96" (2.5cm x 244cm)	#JTA 19344BK	Black	PWC DOCK LINE, 2 PIECES 0.98" x 96" (2.5cm x 244cm)	#JTA 19344RD	Red	PWC DOCK LINE, 2 PIECES 0.98" x 96" (2.5cm x 244cm)	#JTA 19344BL	Blue
PWC DOCK LINE, 2 PIECES 0.98" x 96" (2.5cm x 244cm)	#JTA 19344NO	Orange	PWC DOCK LINE, 2 PIECES 0.98" x 96" (2.5cm x 244cm)	#JTA 19344YW	Yellow	PWC DOCK LINE, 2 PIECES 0.98" x 96" (2.5cm x 244cm)	#JTA 19344NY	Neon Green

132



PRODUCT	STYLE	COLOR
PWC Dock Bumper	#JTA 17344	Assorted

The Jetribbe Dock Bumper, is constructed of tough nylon outer shell, and the core in a high-density energy impact absorbing EVA foam. Compact and foldable, it is easy to use with adjustable webbing to accommodate most PWC's. It comes complete with a mesh storage bag.



PRODUCT	STYLE	COLOR
Tow Line Float	#JTA 17341	Assorted

The Jetribbe Tow Line Float attaches easily to any towable line. The float line keeps the line floating above the water to reduce the chances of your line being sucked into your PWC's pump.



PRODUCT	STYLE	COLOR
Big Boy Anchor Bag	#JTA 17342	Orange

The Big Boy Soft Anchor Bag is an easy and compact system. Just filled with sand or gravel. To hold your big PWC in place. Holds about 30-40 lbs or 13.60-18.14 kg of gravel or sand. Comes complete with a mesh storage bag.





PRODUCT	STYLE	COLOR
Umbrella	#JTA 18368	Red / Black



PRODUCT	STYLE	COLOR
Beach Mat	#JTA 18388	Multicolor 4' x 8'; 122 x 244cm

133



PRODUCT	STYLE	COLOR
Stand-Up Charm	#JTA 14301	Silver+ White Gold Plated

PRODUCT	STYLE	COLOR
Sit-Down Charm	#JTA 14302	Silver+ White Gold Plated



PRODUCT	STYLE	COLOR
Jettribe Gift Card	#JTA 18010	\$10 Value

PRODUCT	STYLE	COLOR
Jettribe Gift Card	#JTA 18025	\$25 Value

PRODUCT	STYLE	COLOR
Jettribe Gift Card	#JTA 18050	\$50 Value

PRODUCT	STYLE	COLOR
Jettribe Gift Card	#JTA 18000	\$100 Value



The Jettribe Dog vest is designed to match your pet's active water lifestyle. Made of the exact materials as the Human vests, the vests are constructed out of Neoprene and EVA foam to allow maximum flexibility and flotation.

Features dual 38 mm adjustable hidden straps, and a front adjustable hidden chest strap. Dual retrieval handles on the L and XL models.

PRODUCT	STYLE	COLOR
Dog Flotation Vest	#JTA 17345	Light Green

### DOG VEST SIZE CHART

Size	
XX - Small	13" - 17" (33cm - 43cm)
X - Small	17" - 22" (43cm - 56cm)
Small	22" - 27" (56cm - 69cm)
Medium	27" - 32" (69cm - 81cm)
Large	32" - 36" (81cm - 91cm)
X-Large	36" - 42" (91cm - 107cm)

Measure the circumference widest part of your dog rib cage.

134



PRODUCT	STYLE	COLOR
Beach Towel	#JTA 18378	Green/Black 27' 5" X 55'; 70x140cm



PRODUCT LINE	SIZE	MATERIAL
POSTER	15 x 24" (38cm x 61cm)	Thick Heavy Paper



STYLE	MODEL
#JTA 17358-PU	Janna



STYLE	MODEL
#JTA 16350-PT	Janna



STYLE	RIDER
#JTA 17358-KZ	Gyorgy Kasza



STYLE	MODEL
#JTA 16350-PS	Bradi

PRODUCT LINE	SIZE	MATERIAL
DECALS	12 x 18" (30.5cm X 46cm)	Vinyl - Die Cut



STYLE	COLOR
#JTA 17321-YW	Yellow



STYLE	COLOR
#JTA 17321-RD	Red



STYLE	COLOR
#JTA 17321-PK	Pink



STYLE	COLOR
#JTA 17321-BL	Blue

PRODUCT LINE	SIZE	MATERIAL
BANNER	9 x 3ft (275cm x 92cm)	Vinyl



STYLE	COLOR
#JTA 17365-TU	Turquoise



STYLE	COLOR
#JTA 17365-BK	Yellow/ Black



STYLE	COLOR
#JTA 17365-PU	Purple



STYLE	COLOR
#JTA 17365-RD	Red



STYLE	COLOR
#JTA 17365-GN	Green



STYLE	COLOR
#JTA 17365-OR	Orange



STYLE	COLOR
#JTA 17365-YW	Yellow/ Blue



STYLE	COLOR
#JTA 17365-BL	Blue

QUANTITY OF DECALS

- 2 pcs 17.5 " x 3.5 "
- 2 pcs 12.5 " x 2.5 "
- 2 pcs 6 " x 1.5 "
- 2 pcs 4.5 "x 1 "
- 3 pcs 2 "x 1.5 "
- 2 pcs 1.5 "x 1.5 "
- 1 pcs 2.5 "x 2.5 "
- 1 pcs 2 "x 2 "
- 1 pcs 2 "x 2 "



PRODUCT	STYLE	COLOR
DECAL SQUEEGEE	#JTA 12335	Yellow Plastic



PRODUCT	STYLE	SIZE
DECAL-OFF SPRAY	#JTA 12314	2oz Bottle



PRODUCT	STYLE	SIZE
DECAL-ON SPRAY	#JTA 12315	2oz Bottle

PRODUCT LINE	SIZE	MATERIAL
JETTRIBE ACRYLIC SIGN	31.5" x 5.9" (80cm x 15cm)	Polycarbonate



STYLE	COLOR
#JTA 19341	Red/Black



PRODUCT LINE	SIZE	MATERIAL
JETTRIBE ICON SIGN	15.7" x 15.7" (40cm x 40cm)	Polycarbonate

STYLE	COLOR
#JTA 19342	Red/Black





137



138







139



140





















149

# DIRECTORY

1-2	Index
3-4	Our Mission
5-12	Race Wet Suits
13-20	Neoprene Tour Coat
21-22	Lifestyle Pictures
23-26	USCG Side Entry Race Vest
27-28	UR-20 Side Entry Race Vest
29-30	RS-18P Race Vest with Chest Plate
31-32	Custom Race Numbers
33-34	RS-16 PWC Side Entry Race Vest
35-38	Ladies Race Suit
39-40	Ladies Neoprene Tour Coat
41-42	Ladies Race Vest
43-44	Race Boot
45-46	PWC Ride Shoes
47-48	Race Gloves
49-50	Back Deflector
51-52	Leg Deflector And Number Plate
53-54	Pit Shirts
55-58	Rashguards
59-62	Mens Board Shorts
63-68	T-Shirts
69-72	Mens & Ladies Hoodie Sweatshirt
73-80	Ladies Rashguard
81-82	Lifestyle Pictures
83-84	Ladies Tops
85-88	Ladies Board Shorts
89-90	Lifestyle Pictures
91-94	Swim Wear
95-96	Lifestyle Pictures
97-102	Swim Wear
103-104	Lifestyle Pictures
105-110	Swim Wear
111-114	Gear Bags & Back Packs
115-116	Hats
117-124	PWC Goggles & Glasses
125-126	Covers
127-128	Towables
129-136	Accessories
137-148	Jettribe Family
149-150	Directory

150